



HESTORE.HU

elektronikai alkatrész áruház

EN: This Datasheet is presented by the manufacturer.

Please visit our website for pricing and availability at www.hestore.hu.

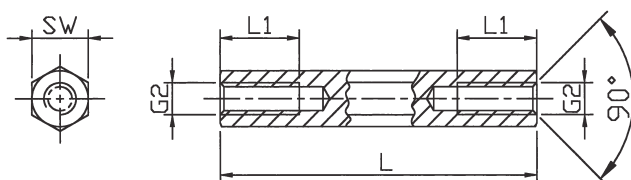
spacer bolt

[Steel, metric thread]



Standard range – spacer bolts [Zinc, plated]

EXECUTION DII [Internal / internal thread]



Internal thread lengths [mm]

L	L1 at M2.5 to M5	L1 at M2	L1 at M6	L1 at M8
5	5	5	5	
8	8	8	8	
10	10	10	10	
12	12	6	12	
15	15	6	15	15
18	9	6	9	
20	10	6	10	20
from 30	10	6	12	14

Order No.	Execution	Material	SW* (hexagon)	Thread	Standard lengths in mm
121 x (length)	DII	Steel	SW4	M2	5, 8, 10, 12, 15, 18, 20, 25, 30, 35, 40
1212 x	DII	Steel	SW4	M2.5	5, 8, 10, 12, 15, 18, 20, 25, 30, 35, 40
123 x	DII	Steel	SW5	M3	5, 8, 10, 12, 15, 18, 20, 25, 30, 35, 40, 45, 50
124 x	DII	Steel	SW5.5	M3	5, 8, 10, 12, 15, 18, 20, 25, 30, 35, 40, 45, 50, 55, 60, 65, 70
125 x	DII	Steel	SW6	M3	5, 8, 10, 12, 15, 18, 20, 25, 30, 35, 40, 45, 50, 55, 60, 65, 70, 75, 80, 85, 90, 95, 100
126 x	DII	Steel	SW7	M4	5, 8, 10, 12, 15, 18, 20, 25, 30, 35, 40, 45, 50, 55, 60, 65, 70, 75, 80, 85, 90, 95, 100
127 x	DII	Steel	SW8	M4	5, 8, 10, 12, 15, 18, 20, 25, 30, 35, 40, 45, 50, 55, 60, 65, 70, 75, 80, 85, 90, 95, 100
128 x	DII	Steel	SW8	M5	8, 10, 12, 15, 18, 20, 25, 30, 35, 40, 45, 50, 55, 60, 65, 70, 75, 80, 85, 90, 95, 100
129 x	DII	Steel	SW10	M6	10, 12, 15, 18, 20, 25, 30, 35, 40, 45, 50, 55, 60, 65, 70, 75, 80, 85, 90, 95, 100
1213 x	DII	Steel	SW13	M8	15, 20, 25, 30, 35, 40, 45, 50, 55, 60, 65, 70, 75, 80, 85, 90, 95, 100

*SW: width across flats

Ordering example: 129 x 50 = DII / St / SW10 / M6 x 50