



HESTORE.HU

elektronikai alkatrész áruház

EN: This Datasheet is presented by the manufacturer.

Please visit our website for pricing and availability at www.hestore.hu.

Features:

- * Available in 2 thru 24 circuit
- * Voltage rating 600V (R.M.S.)
- * Current rating 9 Amps per circuit
- * Mates with 4257-N series housings
- * Accepts .045" (1.14mm) square pins Tin-plated

Specification:

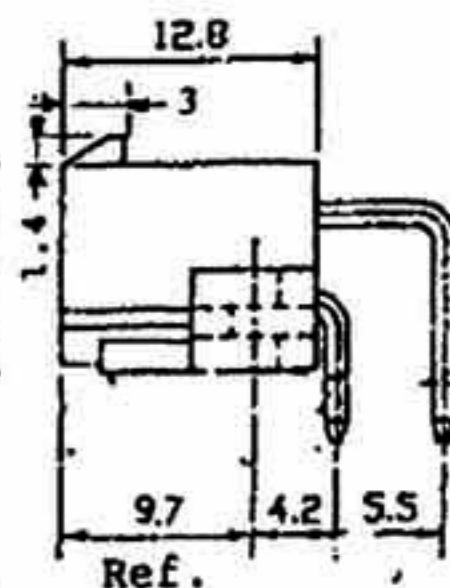
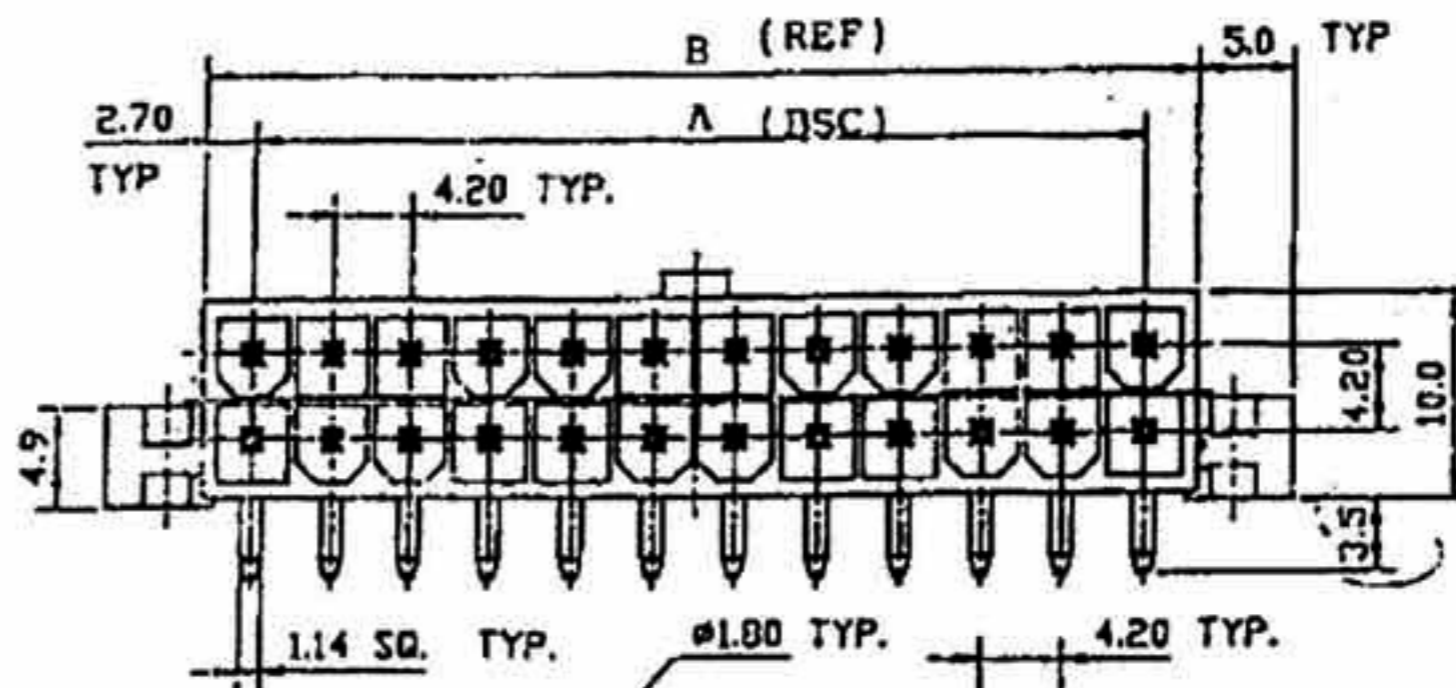
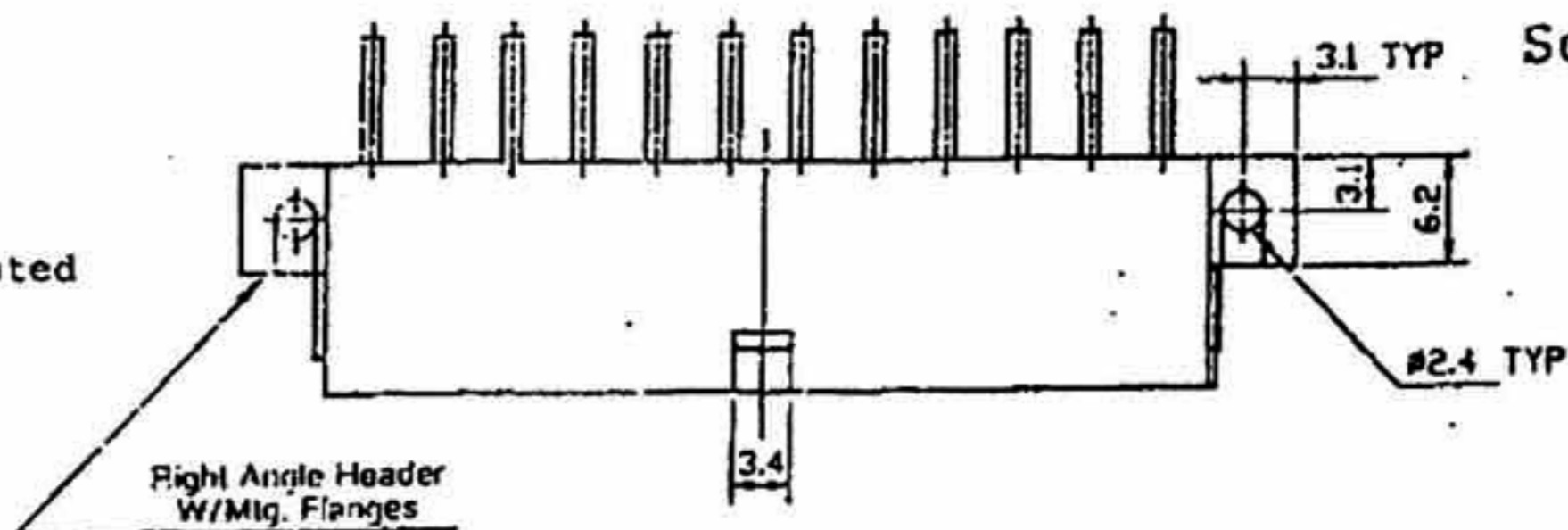
Material:

- * Headers pin- Brass Tin-plated
- * Housing- UL 94V-2 Nylon 66

Electrical:

- * Withstanding Voltage: 1500V AC for 60 seconds
- * Insulation Resistance: 1000M ohms min
- * Temperature Rise: 30°C max
- * Storage Temperature Range: -40°C to 105°C

Series



UNIT: mm

Replace "xx" with number of circuits, 02-24

Dimensional Information (mm)

Circuits	Dim. A	Dim. B	Circuits	Dim. A	Dim. B	Circuits	Dim. A	Dim. B
2		5.4	10	16.8	22.2	18	33.0	39.0
4	4.2	9.6	12	21.0	26.4	20	37.0	43.2
6	8.4	13.8	14	25.2	30.6	22	42.0	47.4
8	12.6	18.0	16	29.4	34.8	24	46.0	51.6

