



HESTORE.HU

elektronikai alkatrész áruház

EN: This Datasheet is presented by the manufacturer.

Please visit our website for pricing and availability at www.hestore.hu.

ODROID-GO Advance BE

ODROID-GO Advance Black Edition KIT, Clear White, RockChip RK3326, Mali-G31 Dvalin

HESTORE Part no.: 100.409.48



Technical specifications

Processor	CPU : RockChip RK3326(Quad-Core ARM Cortex-A35 1.3GHz) GPU : Mali-G31 Dvalin
Memory	1GB (DDR3L 786Mhz, 32 Bits bus width)
Storage	SPI Flash(16Mbytes Boot), Micro SD Card slot(UHS-1 Capable interface)
Display	3.5inch 320×480 TFT LCD (ILI9488, MIPI interface)
Audio	Earphone Jack, 0.5Watt 8Ω Mono
Battery	Li-Polymer 3.7V/3000mAh, Up to 9 hours of continuous game playing time
DC Jack	5V input, USB-C power connector: A USB-C charging cable is included in the package.
External I/O	USB 2.0 Host x 1, 10Pin port(I2C, GPIO, IRQ at 3.3Volt)
Input Buttons	F1, F2, F3, F4, F5, F6, A, B, X, Y, Direction Pad, Left Shoulder, Right Shoulder, Left Shoulder2, Right Shoulder2, Analog joystick
Wireless	Built-in 2.4Ghz 802.11b/g/n (ESP-WROOM-S2)
Power consumption	Game emulation: 300 ~ 550mA (depends on backlit brightness and type of game emulations and the wireless usage) Power off mode: <1mA If you turn off the WiFi, the power consumption will be same as the previous Revision 1.0.
Charging time	2.5~3 hours when the device turns off. When you play game, it takes 4~5 hours.
Dimensions	155x72x20 mm (6.1×2.8×0.8 inch), Weight: 180 g (6 oz)

PACKAGE INCLUDE



A	USB Type-C Power Cable	J	D-PAD rubber
B	Top enclosure	K	A, B, X, Y button rubber
C	Bottom enclosure	L	battery sticker
D	Plastic L/R/L2/R2 trigger, X, Y, power Buttons	M	Analog joystick
E	Plastic D-pad, A, B Buttons	N	320x480 TFT LCD
F	ODROID-GO-Advance board	O	0.5W speaker
G	3000mAh battery	P	1.7x5 screws (7 pcs)
H	LCD window	Q	1.7x8 screws (4 pcs)
I	I ~ VI button rubber	R	Driver

*** 8GB or higher capacity MicroSD card is additionally required.**

You can download the OS image and then, you will write the image to your SD card. There are some ways to write the OS image. For beginners, we recommend the use of an Etcher tool.

Installing OS image on your SD card

ASSEMBLY GUIDE

https://wiki.odroid.com/odroid_go_advance/go_adv_assembling

Force Power OFF:

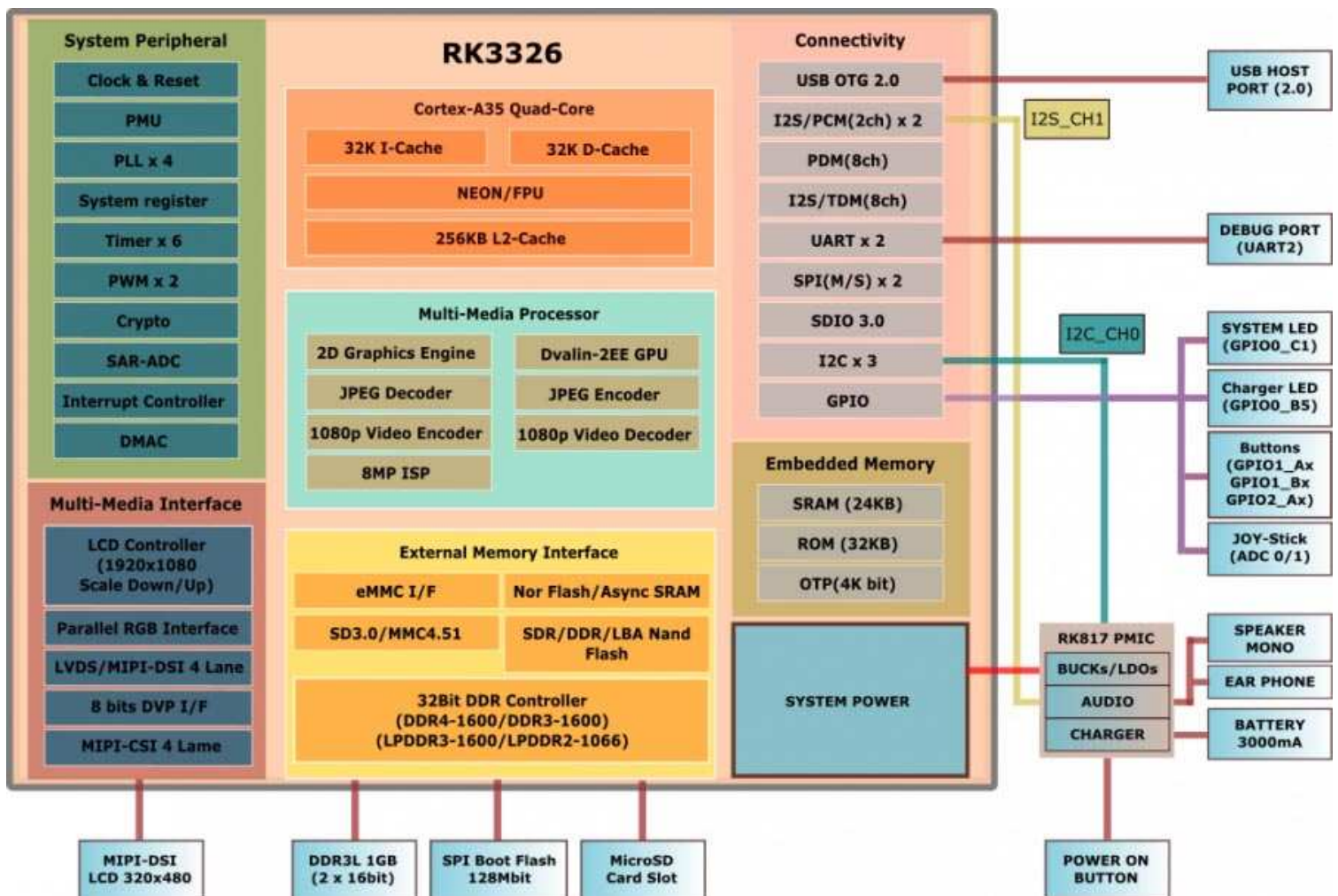
If you have any problem with your ODROID-GO-Advance, you will try to switch off.

You can switch off ODROID-GO-Advance by pushing the on/off buttons for about 6 seconds.

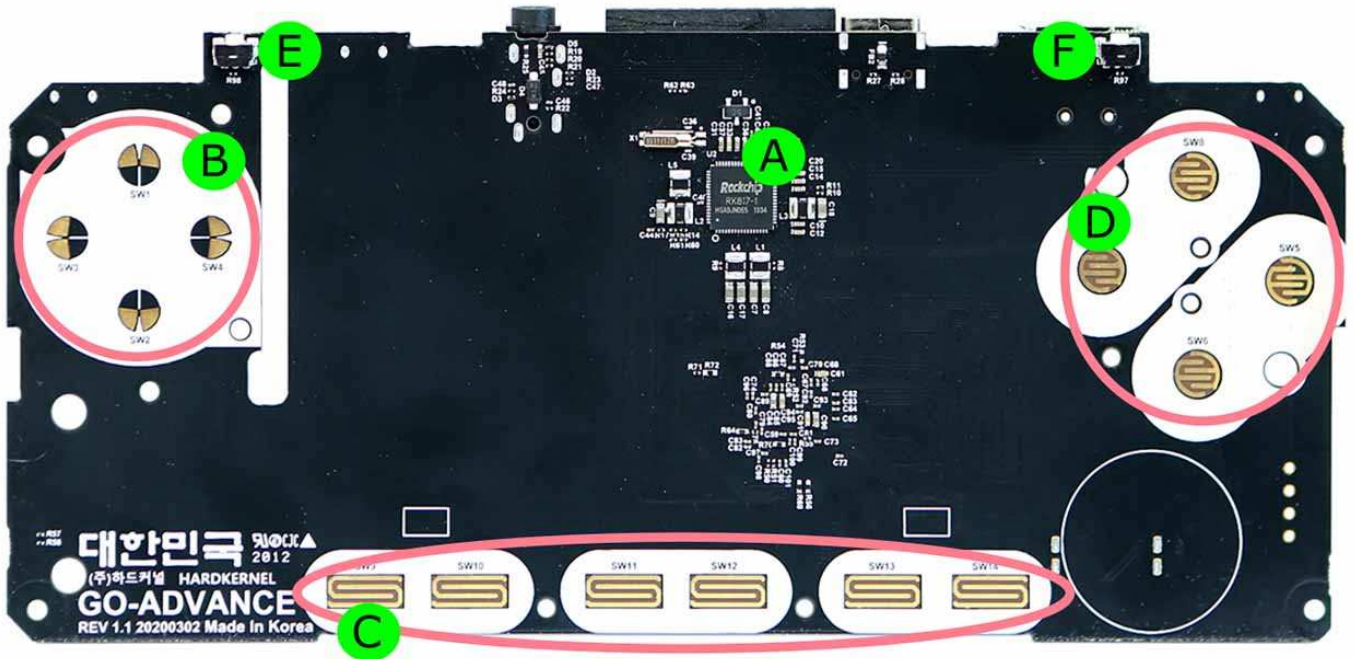
THE EMULATOR SUPPORTS:

atari2600, atari5200, atari7800, atarilynx, gamegear, gb, gba, gbc, mastersystem, megadrive, nes, pcengine, pcenginecd, psx, segacd, snes, psp, and more.... (Some game ROMs cannot run at full speed.)

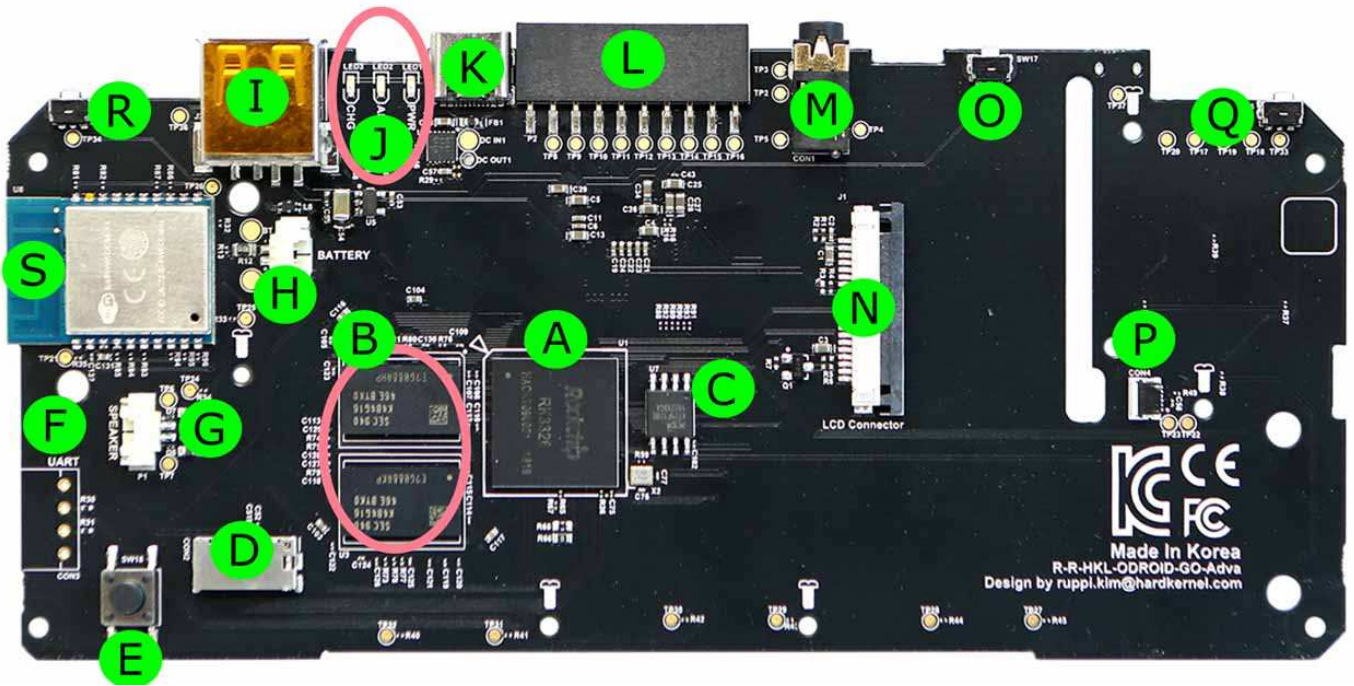
DIAGRAM



BOARD DETAIL



A	PMIC(RK817) including a charger and audio features.	D	X, Y, A, B buttons
B	D-pad buttons	E	Trigger Left2
C	I ~ VI buttons (F1, F2, F3, F4, F5, F6)	F	Trigger Right2



A	CPU : Rockchip RK3326	K	USB-C power Jack
B	RAM : 1GB DDR3L	L	10pin expansion port
C	SPI Flash(16Mbytes Boot)	M	Audio jack
D	MicroSD card slot	N	20pin LCD connector
E	Forced SD card boot(without spirom)	O	PWR switch
F	UART port(But not mounted default)	P	Analog joystick connector
G	Speaker connector	Q	Left trigger button
H	Battery connector	R	Right trigger button
I	USB 2.0 type-A Host	S	Wireless module ESP-WROOM-S2
J	Statue LED(charger, alive, power)		

Made in PRC, distributed by HESTORE Hungary Ltd. in EU.

<https://www.hestore.hu/>