



HESTORE.HU

elektronikai alkatrész áruház

EN: This Datasheet is presented by the manufacturer.

Please visit our website for pricing and availability at www.hestore.hu.



Water Pressure Sensor G1/4 1.2Mpa

SKU 114991178



Description

This is a pressure measuring sensor. You can use it in clean, non-corrosive gas and liquid.

Features

Compact, Easy to Install

High Sealing Performance

High Quality Hall Effect Sensor

RoHS Compliant

Specifications

Working Voltage: DC 5±0.5V

Working Current: ≤10mA (DC 5V)

Working Voltage: DC 0.5~4.5V

Working Pressure Rate Range: 0~1.2Mpa

Max. Pressure: 2.4Mpa

Destructive pressure: 3.0Mpa

Working Temperature: -20~+ 105°C

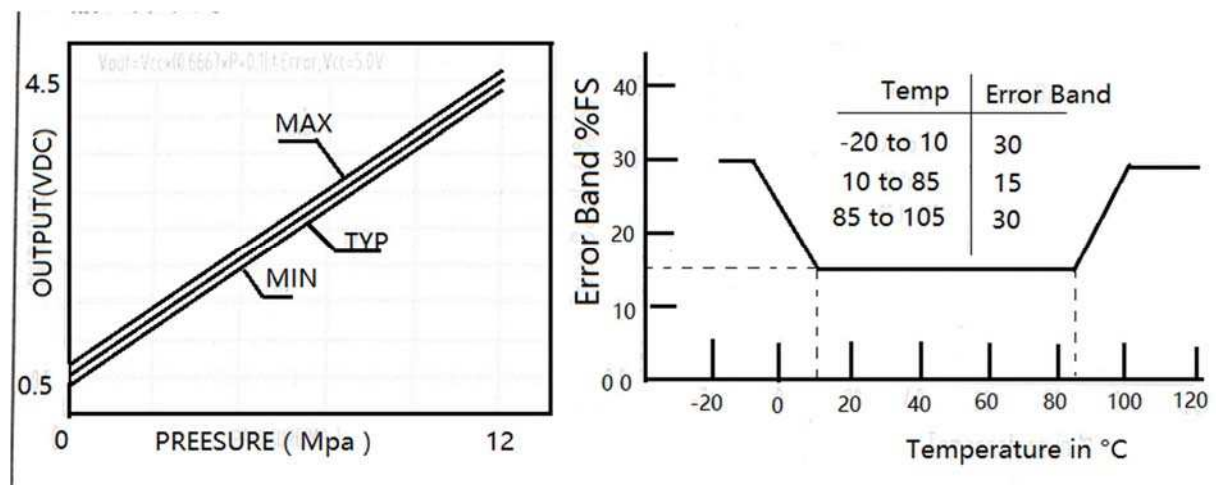
Storage Temperature: -20~+ 105°C

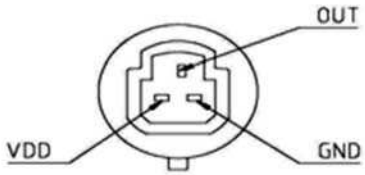
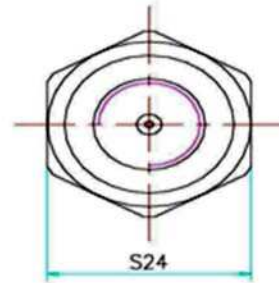
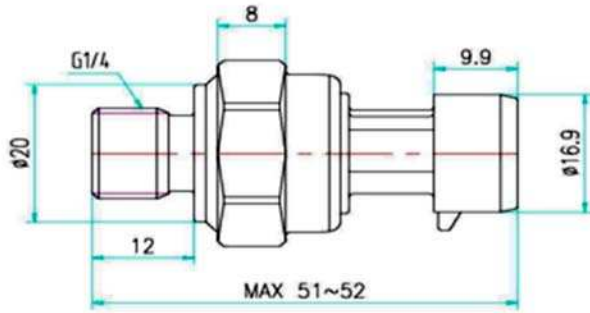
Measurement Accuracy: ±1.5%FS

Response Time: ≤2.0ms

IP65

Cycle Life: 1,000,000 pcs





引线定义:

VCC: RED (电源+)

OUT: BLUE (信号输出)

GND: BLACK (电源-)

Partlist

1 x Water Pressure Sensor

Technical Details

Weight G.W 52g

Battery Exclude