

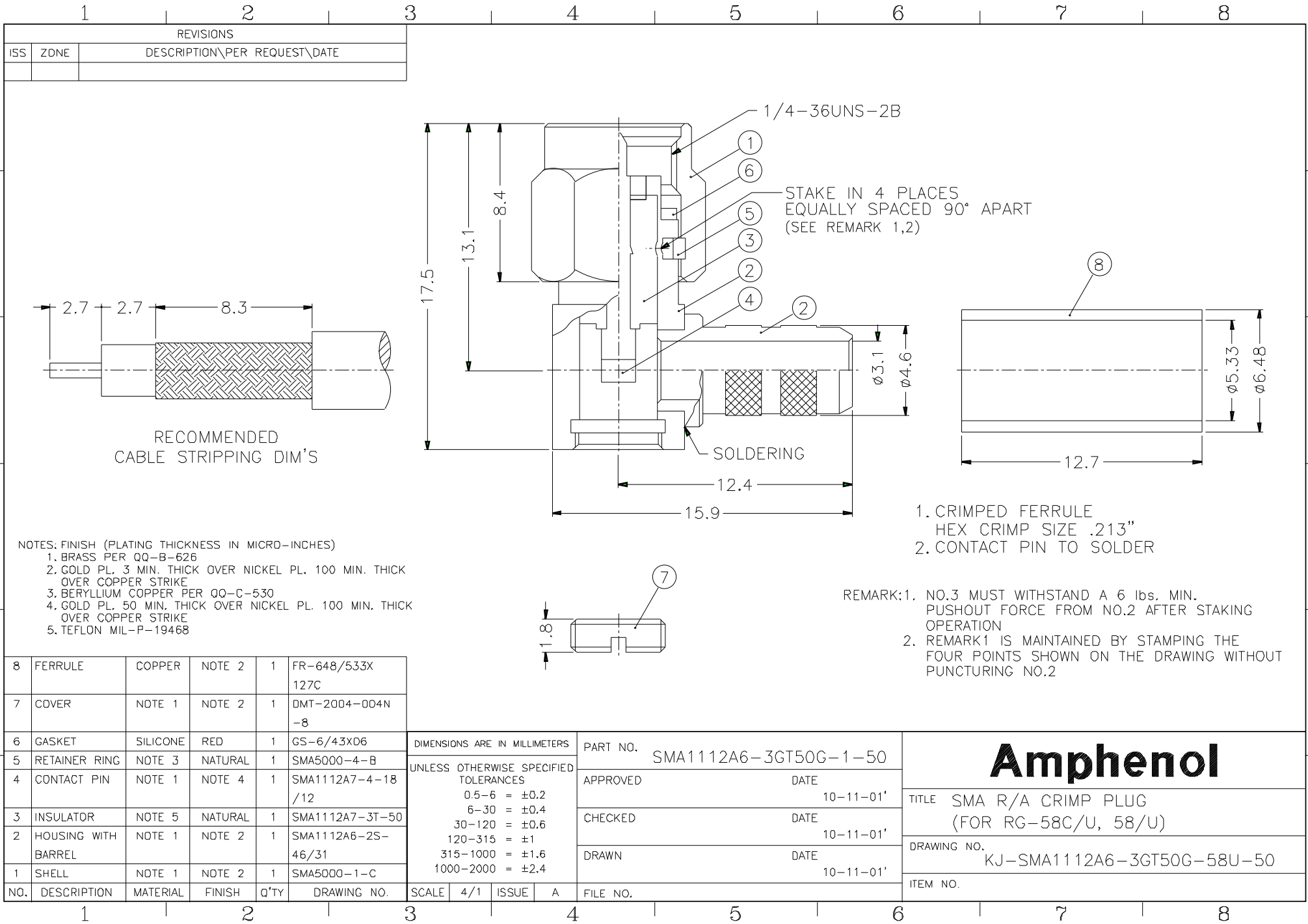


**HESTORE.HU**

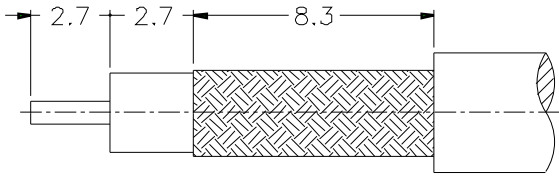
elektronikai alkatrész áruház

**EN:** This Datasheet is presented by the manufacturer.

Please visit our website for pricing and availability at [www.hestore.hu](http://www.hestore.hu).



REVISIONS			
ISS	ZONE	DESCRIPTION	PER REQUEST\DATE



RECOMMENDED  
CABLE STRIPPING DIM'S

NOTES: FINISH (PLATING THICKNESS IN MICRO-INCHES)

1. BRASS PER QQ-B-626
2. GOLD PL. 3 MIN. THICK OVER NICKEL PL. 100 MIN. THICK OVER COPPER STRIKE
3. BERYLLIUM COPPER PER QQ-C-530
4. GOLD PL. 50 MIN. THICK OVER NICKEL PL. 100 MIN. THICK OVER COPPER STRIKE
5. TEFLON MIL-P-19468

8	FERRULE	COPPER	NOTE 2	1	FR-648/533X 127C
7	COVER	NOTE 1	NOTE 2	1	DMT-2004-004N -8
6	GASKET	SILICONE	RED	1	GS-6/43X06
5	RETAINER RING	NOTE 3	NATURAL	1	SMA5000-4-B
4	CONTACT PIN	NOTE 1	NOTE 4	1	SMA1112A7-4-18 /12
3	INSULATOR	NOTE 5	NATURAL	1	SMA1112A7-3T-50
2	HOUSING WITH BARREL	NOTE 1	NOTE 2	1	SMA1112A6-2S- 46/31
1	SHELL	NOTE 1	NOTE 2	1	SMA5000-1-C
NO.	DESCRIPTION	MATERIAL	FINISH	Q'TY	DRAWING NO.

DIMENSIONS ARE IN MILLIMETERS				PART NO.			
UNLESS OTHERWISE SPECIFIED TOLERANCES 0.5-6 = ±0.2 6-30 = ±0.4 30-120 = ±0.6 120-315 = ±1 315-1000 = ±1.6 1000-2000 = ±2.4				SMA1112A6-3GT50G-1-50			
				APPROVED	DATE	10-11-01'	
				CHECKED	DATE	10-11-01'	
				DRAWN	DATE	10-11-01'	
SCALE	4/1	ISSUE	A	FILE NO.			

1. CRIMPED FERRULE  
HEX CRIMP SIZE .213"
2. CONTACT PIN TO SOLDER

REMARK:1. NO.3 MUST WITHSTAND A 6 lbs. MIN.  
PUSHOUT FORCE FROM NO.2 AFTER STAKING  
OPERATION  
2. REMARK1 IS MAINTAINED BY STAMPING THE  
FOUR POINTS SHOWN ON THE DRAWING WITHOUT  
PUNCTURING NO.2

<b>Amphenol</b>	
TITLE SMA R/A CRIMP PLUG (FOR RG-58C/U, 58/U)	
DRAWING NO. KJ-SMA1112A6-3GT50G-58U-50	
ITEM NO.	