



HESTORE.HU

elektronikai alkatrész áruház

EN: This Datasheet is presented by the manufacturer.

Please visit our website for pricing and availability at www.hestore.hu.

2J3204M-250LL100-C20N

Old Product Name: 2J320M

(DATASHEET)

| | |
|--------------------|--|
| Type | Cell Antenna |
| Frequencies | GSM (900 MHz) DCS (1800 MHz) PCS (1900 MHz) 3G (UMTS 2.1 GHz) |
| Mounting | Magnetic Mount |
| Revision | 00 |



1. SPECIFICATION

1.1. Electrical Specifications

| | | | | |
|-----------------------|----------------|----------------|----------------|-------------------|
| Frequencies | GSM (900 MHz) | DCS (1800 MHz) | PCS (1900 MHz) | 3G (UMTS 2.1 GHz) |
| Impedance | 50 Ohms | | | |
| Polarization | Vertical | | | |
| Gain** | 5 dBi Max. | 1.1 dBi | 1.1 dBi | 0.9 dBi |
| VSWR* | <2:1 | | | |
| Power handling | 30W | | | |
| Operating temperature | -40°C to +85°C | | | |

*Measured with 250 cm RG174 on metal ground

**Measured values in tolerance +/- 2dBi

1.2. Connection Specification

Connector type: SMA Male

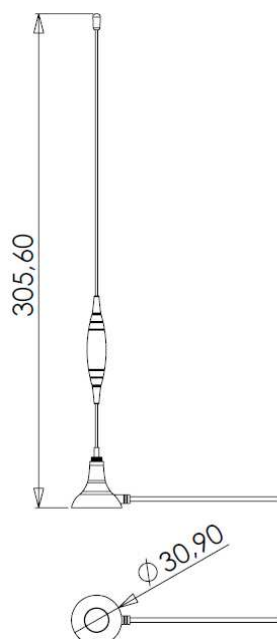
Cable: RG174U

Cable length: 250 cm

For different cable length and connector type ask our sales team.

1.3. Mechanical Specifications and Dimensions

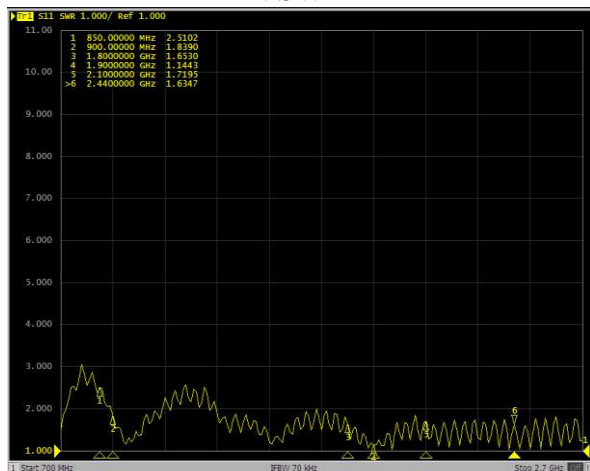
Material: ABS
 Max. dimensions: 30.9mm x 305.6mm (D x H)
 Weight: 60g 'weight with 2.5m RG174'
 Colour: Black (for different colours please ask our sales team)



2. MEASUREMENT

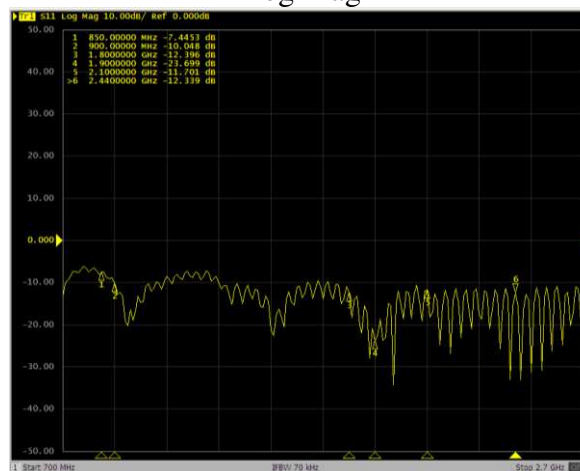
2.1. S11

VSWR



Tested with 250cm cable RG174 with SMA male

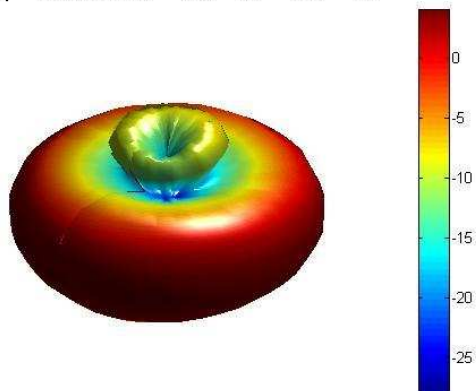
Log Mag



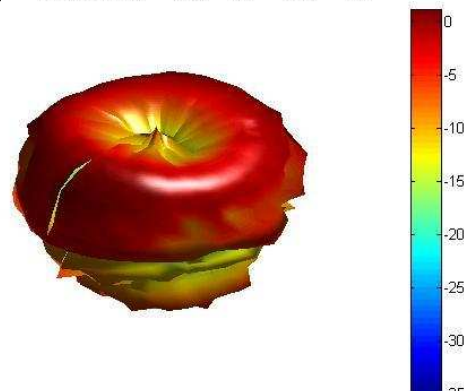
Tested with 250cm cable RG174 with SMA male

2.2. 3D radiation pattern

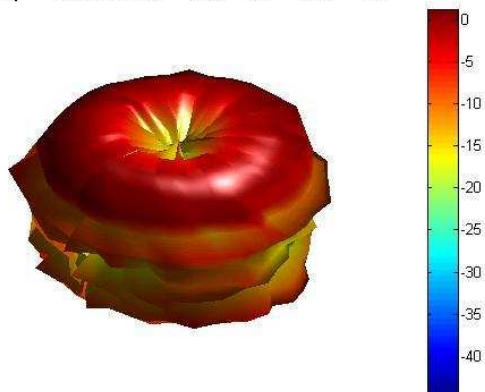
Freq = 0.907GHz Az= 45 EL= 45



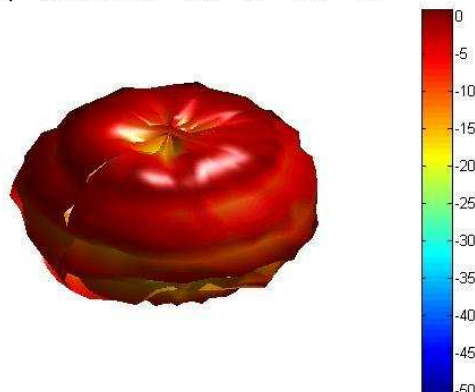
Freq = 1.807GHz Az= 45 EL= 45



Freq = 1.906GHz Az= 45 EL= 45



Freq = 2.104GHz Az= 45 EL= 45



3. IMAGES

