



**HESTORE.HU**

elektronikai alkatrész áruház

**EN:** This Datasheet is presented by the manufacturer.

Please visit our website for pricing and availability at [www.hestore.hu](http://www.hestore.hu).

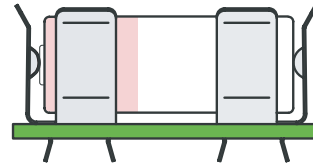
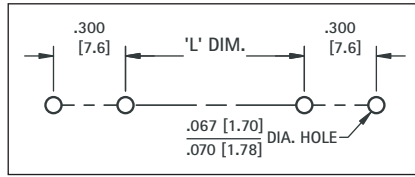
## REFER TO PAGE 6 FOR PART DIMENSIONS

NOTE: ALL MOUNTING DIMENSIONS ARE FOR REFERENCE ONLY. VERIFY YOUR BATTERY LAYOUT PRIOR TO FABRICATION.

**FIGURE 5**



Mounting Detail



**82**  
**92**  
**2915**

**52**

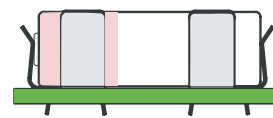
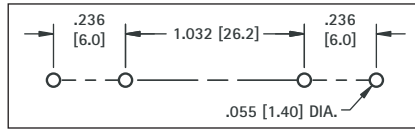
CAT. NO.	L DIMENSION		
	For "AAA"	For "N"	For 12 VOLT
<b>82 with 82</b>	1.080 (27.4)	.510 (13.0)	.450 (11.4)

CAT. NO.	L DIMENSION						
	For "A"	For "4/5A"	For "2/3A"	For "1/2A"	For "AA"	For "4/5AA"	For "1/2AA"
<b>52 with 52</b>	1.120 (28.5)	1.020 (25.9)	.645 (16.4)	.300 (7.6)	1.320 (33.5)	1.020 (25.9)	.300 (7.6)
<b>92 with 92</b>	1.120 (1.12)	1.020 (25.9)	.645 (16.4)	.300 (7.6)	1.320 (33.5)	1.020 (25.9)	.300 (7.6)
<b>2915 with 2915</b>	1.120 (1.12)	1.020 (25.9)	.645 (16.4)	.300 (7.6)	1.320 (33.5)	1.020 (25.9)	.300 (7.6)

**FIGURE 6**



Mounting Detail



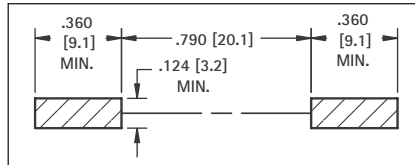
**51**

CAT. NO.	L DIMENSION
<b>51 with 51</b>	1.032 (26.2)

**FIGURE 7**



Pad Layout



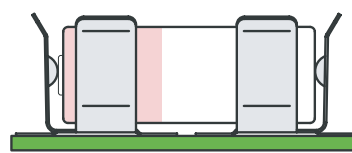
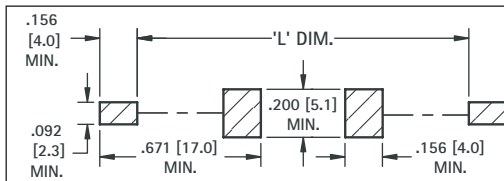
**50**

CAT. NO.	L DIMENSION
<b>50 with 50</b>	1.032 (26.2)

**FIGURE 8**



Pad Layout



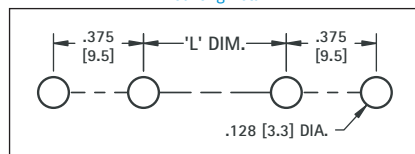
**55**

CAT. NO.	L DIMENSION		
	For "A"	For "4/5A"	For "2/3A"
<b>55 with 55</b>	1.880 (47.8)	1.280 (32.5)	1.220 (31.0)

**FIGURE 9**



Mounting Detail



**206**

**207**  
**208**

CAT. NO.	L DIMENSION
<b>206 with 206</b>	1.100 (27.9)

CAT. NO.	L DIMENSION
<b>207 with 207</b>	.812 (20.6)

CAT. NO.	L DIMENSION
<b>208 with 208</b>	1.250 (31.8)