



HESTORE.HU

elektronikai alkatrész áruház

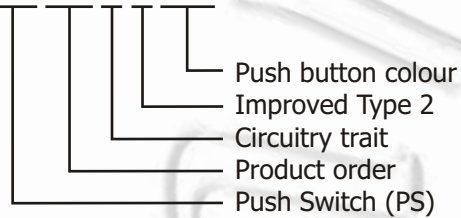
EN: This Datasheet is presented by the manufacturer.

Please visit our website for pricing and availability at www.hestore.hu.

Specification:

- 1) Rating (if not described next to the switch):
3 A 125 VAC; 1 A 250 VAC
- 2) Contact Resistance: 20 mΩ max.
- 3) Insulation Resistance: 500 VDC 100 MΩ min.
- 4) Dielectric strength: 1000 VAC, 1 minute
- 5) Electrical Life: 50000 cycles

PS10B2BK



CIRCUITRY TRAIT

A	ON - OFF	Push on/Push off	With lock
B	OFF - (ON)	Push on	Momentary
C	ON - (OFF)	Push off	Momentary

() indicates momentary

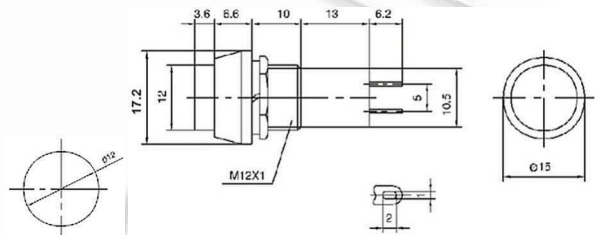
PUSH BUTTON COLOUR

RD	red
GN	green
OR	orange
BU	blue
WH	white
BK	black
YL	yellow

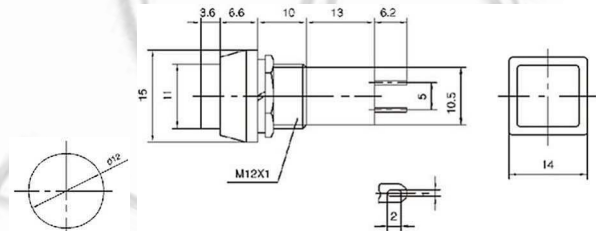
Ninigi



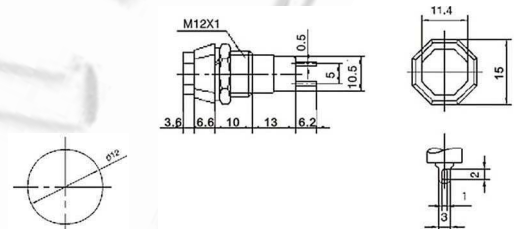
PS11A ON-OFF
PS11B OFF-(ON)
PS11C ON-(OFF)



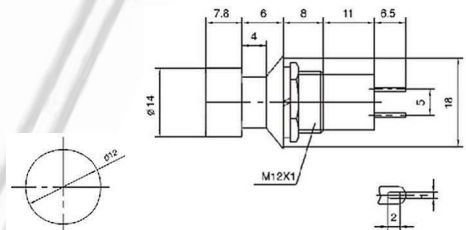
PS12A ON-OFF
PS12B OFF-(ON)
PS12C ON-(OFF)



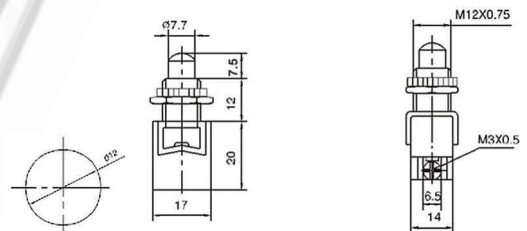
PS14A ON-OFF
PS14B OFF-(ON)
PS14C ON-(OFF)



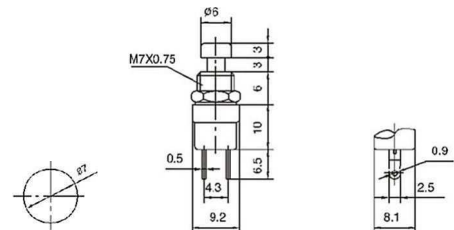
PS16A ON-OFF
PS16B OFF-(ON)
PS16C ON-(OFF)



PS13B OFF-(ON)
PS13C ON-(OFF)
 8 A 125 VAC; 4 A 250 VAC



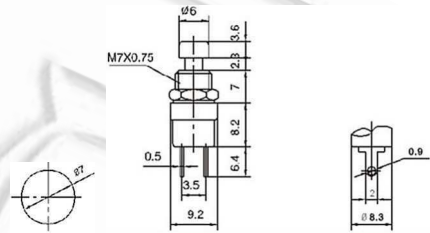
PS10B OFF-(ON)
 (plastic rod)



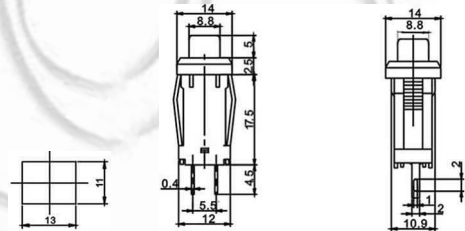
Ninigi



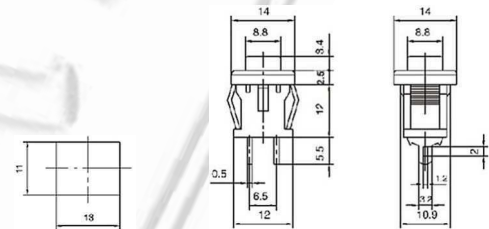
PS10B2 OFF-(ON)
PS10C2 ON-(OFF)
 (metal rod)



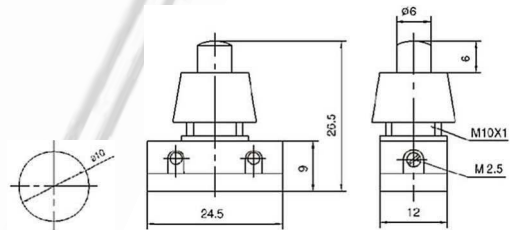
PS15A ON-OFF



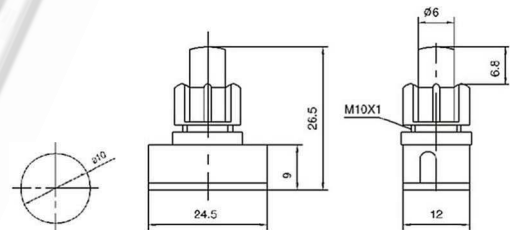
PS15B OFF-(ON)
PS15C ON-(OFF)



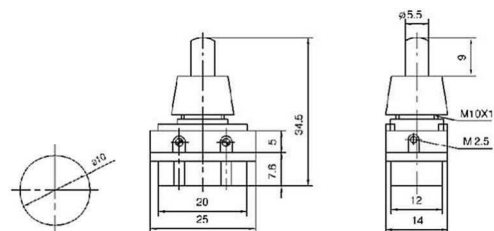
PS17A ON-OFF
 4 A 125 VAC; 2 A 250 VAC



PS17A2 ON-OFF
 (PS17B)



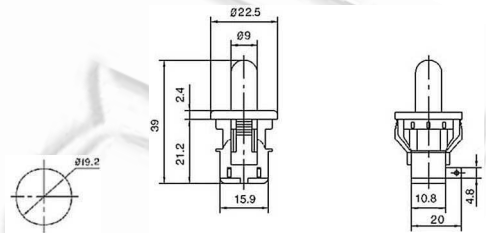
PS17A3 ON-OFF
 (PBS-17B)
 4 A 125 VAC; 2 A 250 VAC



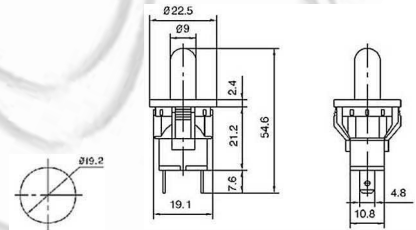
Ninigi



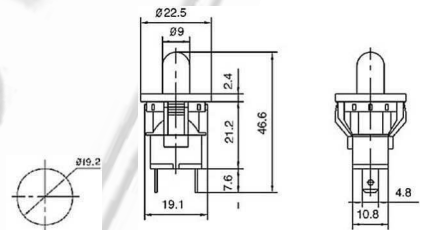
PS19B OFF-(ON)
PS19C ON-(OFF)
 5 A 125 VAC; 2.5 A 250 VAC



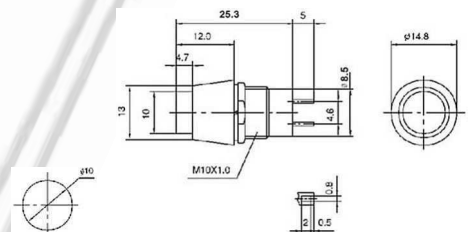
PS19B2 OFF-(ON)
PS19C2 ON-(OFF)
 5 A 125 VAC; 2.5 A 250 VAC



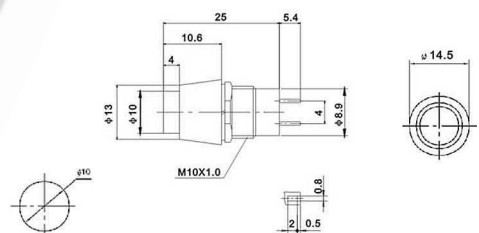
PS19B3 OFF-(ON)
PS19C3 ON-(OFF)
 5 A 125 VAC; 2.5 A 250 VAC



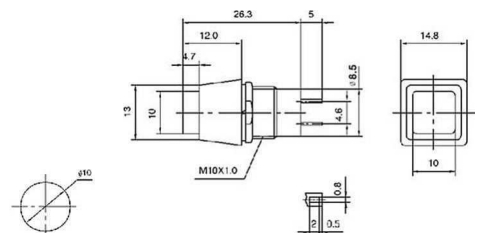
PS20A ON-OFF
PS20B OFF-(ON)



PS20A2 ON-OFF
PS20B2 OFF-(ON)



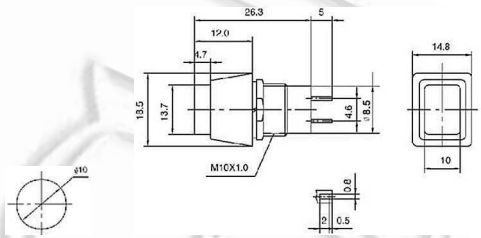
PS21A ON-OFF
PS21B OFF-(ON)



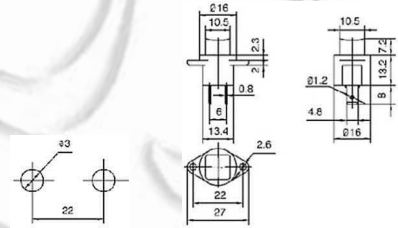
Ninigi



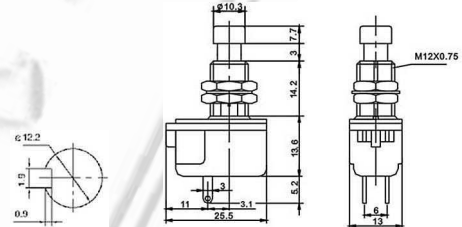
PS22A ON-OFF
PS22B OFF-(ON)



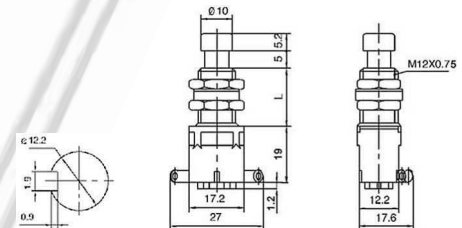
PS23B OFF-(ON)



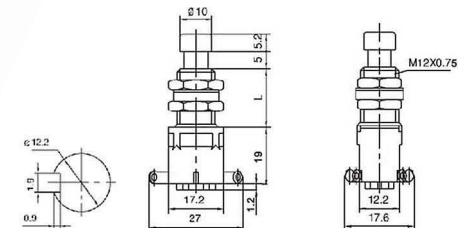
PS24B2 OFF-(ON)
PS24C2 ON-(OFF)
10 A 125 VAC; 2.5 A 250 VAC
SPST 2P



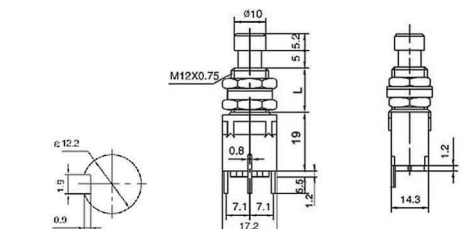
PS24102 ON-ON
PS24112 ON-(ON)
4 A 125 VAC; 2 A 250 VAC
SPDT 3P
(L=14.2 , 11.8 , 9.8)



PS24202 ON-ON
PS24212 ON-(ON)
4 A 125 VAC; 2 A 250 VAC
DPDT 6P
(L=14.2 , 11.8 , 9.8)



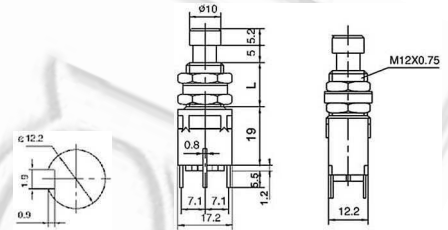
PS24102P ON-ON
PS24112P ON-(ON)
4 A 125 VAC; 2 A 250 VAC
SPDT 3P
(L=14.2 , 11.8 , 9.8)



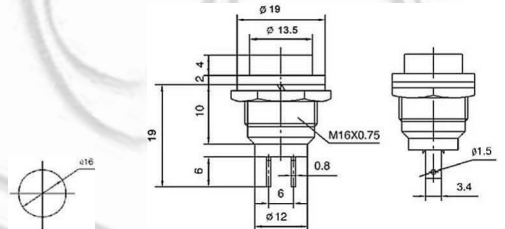
Ninigi



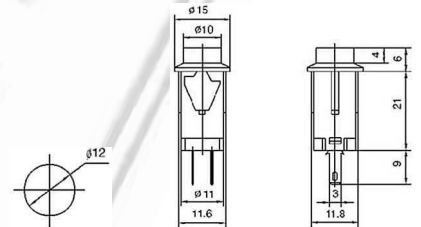
PS24202P ON-ON
PS24212P ON-(ON)
 4 A 125 VAC; 2 A 250 VAC
 DPDT 6P
 (L=14.2, 11.8, 9.8)



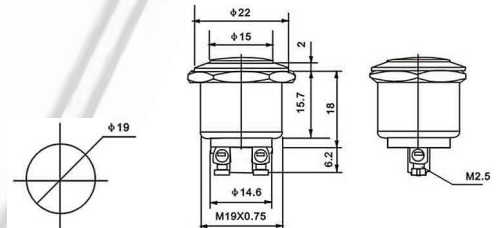
PS26B OFF-(ON)
PS26C ON-(OFF)
 4 A 125 VAC; 2 A 250 VAC



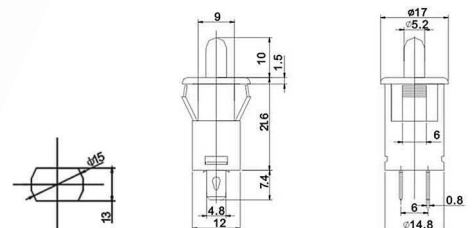
PS27B OFF-(ON)



PS28B OFF-(ON)
 4 A 125 VAC; 2 A 250 VAC



PS29B OFF-(ON)



PS30B OFF-(ON)

