



**HESTORE.HU**

elektronikai alkatrész áruház

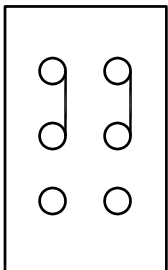
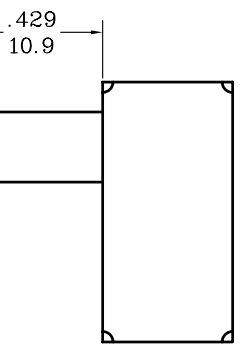
**EN:** This Datasheet is presented by the manufacturer.

Please visit our website for pricing and availability at [www.hestore.hu](http://www.hestore.hu).

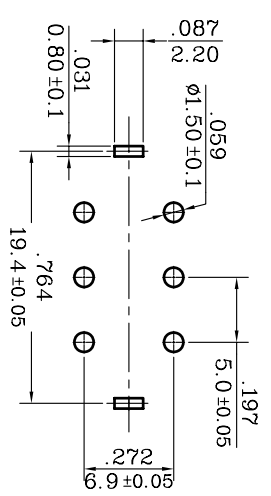
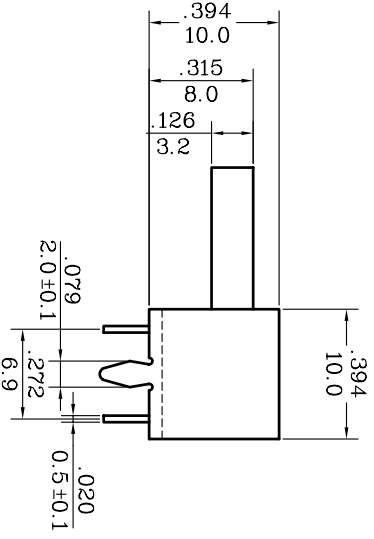
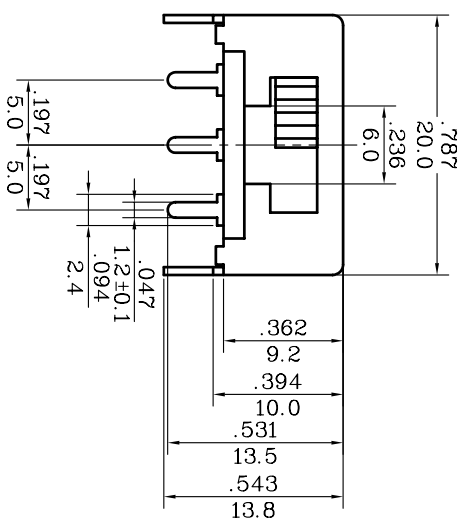
嘉尼企業股份有限公司 CANAL ELECTRONIC CO., LTD.

SCHMATIC DIAGRAM

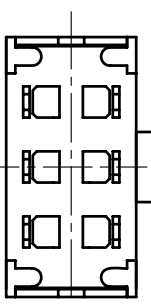
SLIDE SWITCH MODEL SL13



SLIDE SWITCH MODEL SL13  
 RATING: 1A 125VDC  
 CIRCUIT: DOUBLE POLES DOUBLE THROW  
 CONTACT RESISTANCE: 20mΩ (MAX)  
 DIELECTRIC STRENGTH: 1000VAC FOR 1 MINUTE  
 CYCLE: 100,000  
 OPERATION FORCE: 300±200g



P.C.BOARD HOLE



NOTE: 1. TOLERANCES UNLESS OTHERWISE SPECIFIED: ±.012 (in/mm)  
 2. IT IS IN COMPLIANCE CANAL ROHS SPECIFICATION:WI-QA-24

REVISION DESCRIPTION REVISED BY TOLERANCES XX ANGLE SCALE UNIT PART NAME P.C. BOARD HOLE DWG NO

△	REVISION	DESCRIPTION	REVISED BY	TOLERANCES	XX	ANGLE	SCALE	UNIT	PART NAME	P.C. BOARD HOLE	DWG NO
△				馮紅崗	XX	馮紅崗	5/3	mm	SL13規格圖		SI265A
△				CHECKED BY		APPROVED BY					
△	2006.02.24	更換圖框,重新出圖	盧小輝						SL13-(212)C		

