



HESTORE.HU

elektronikai alkatrész áruház

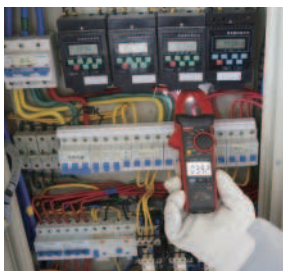
EN: This Datasheet is presented by the manufacturer.

Please visit our website for pricing and availability at www.hestore.hu.



● UT216D

UT216 series digital clamp meters are designed for measuring high frequency currents (up to 400Hz) in railways and aerospace, server rooms, IT systems, etc. Its double injection design gives users a more comfortable grip and enhanced durability. UT216's 6000 count display also provides more precise readings for users.



SPECIFICATIONS

	Range	UT216A	UT216B	UT216C	UT216D
AC current (A)	600A	±(2.5%+5)	±(2.5%+5)	±(2.5%+5)	±(2.5%+5)
AC current frequency response		50/60Hz	40~400Hz	40~400Hz	40~400Hz
DC current (A)	600A			±(2.5%+5)	±(2.5%+5)
AC voltage (V)	750V	±(1.2%+5)	±(1.2%+5)	±(1.2%+5)	±(1.2%+5)
AC voltage frequency response		40~400Hz	40~400Hz	40~400Hz	45~400Hz
DC voltage (V)	1000V	±(0.8%+1)	±(0.8%+1)	±(0.8%+1)	±(0.8%+1)
Resistance (Ω)	60MΩ	±(1%+2)	±(1%+2)	±(1%+2)	±(1%+2)
Capacitance (F)	60mF	±(4%+5)	±(4%+5)	±(4%+5)	±(4%+5)
Frequency (Hz)	10Hz~1MHz		±(0.1%+4)	±(0.1%+4)	±(0.1%+4)
Temperature	-40°C~1000°C			±(2%+5)	±(2.5%+3)
	-40°F~1832°F			±(2%+10)	±(2.5%+6)

Features

	UT216A	UT216B	UT216C	UT216D
Display count	6000	6000	6000	6000
Auto range	√	√	√	√
Jaw opening	30mm	30mm	30mm	30mm
True RMS	√	√	√	√
Diode	Around 3.0V	√	√	√
V.F.C.		√	√	√
NCV	√	√	√	√
Data hold	√	√	√	√
Relative mode	√	√	√	√
MAX/MIN	√	√	√	√
LCD backlight	√	√	√	
Inrush current			√	√
OLED display				√
Analog bar graph			61	21
Flashlight	√	√	√	√
Auto power off	√	√	√	√
Continuity buzzer	√	√	√	√
Low battery indication	≤3.6V	√	√	√
Input protection		√	√	√
Input impedance for DCV	≥10MΩ	√	√	√

GENERAL CHARACTERISTICS

Power	1.5V battery (R03) x 3
Display	38mm x 24mm
Product color	Red and grey
Product net weight	UT216A: 280g; UT216B/C/D: 231.7g
Product size	220mm x 75mm x 40mm
Standard accessories	Batteries, test leads, point contact temperature probe (UT216C/UT216D)
Standard individual packing	Gift box, carrying bag, English manual
Standard quantity per carton	40pcs
Standard carton measurement	485mm x 345mm x 385mm
Standard carton gross weight	UT216A: 20.6kg; UT216B: 19.3kg; UT216C: 20.1kg; UT216D: 20.3kg