



**HESTORE.HU**

elektronikai alkatrész áruház

**EN:** This Datasheet is presented by the manufacturer.

Please visit our website for pricing and availability at [www.hestore.hu](http://www.hestore.hu).

## Technical Specifications

Model	UT381A
Language	EN, FR, DE, IT, ES, SV, PL, CZ
Range	0~400000 lx
Resolution	0~99.99 lx (99.99 fc): 0.01lx (0.01 fc) 100~999.9 lx (999.9 fc): 0.1 lx (0.1fc), 1000~400000 lx (37160 fc): 1 lx (1fc)
Accuracy	±3% calibration as per standard light source when in 2856K. ±6% calibration as per other visual light source.
Unit switch	lx, fc, 1fc=10.764 lx
MAX/MIN/AVG	√
Data hold	√
Color correction coefficient (CCF)	√
Backlight	√
Bluetooth APP	√
Data record	99 sets
Record Interval	1~59 seconds
Measuring methods of probe	Integrated (rotatable), split design
Real-time	√
Over-range Indication	OL display
Low battery Indication	√
Auto power off	√
Battery life	Over 100 hours (Alkaline batteries, Bluetooth and Backlight is off.)
Working temperature and humidity	-10°C~50°C, <90%Rh (non-condensing)
Storage temperature and humidity	-20°C~70°C, <80%Rh (non-condensing)
Characteristic	
Power	AAA x 3
Display size	36 x 49mm
Product size	235 x 64.5 x 39.8mm
Standard individual packing	Gift box



**UNI-TREND  
TECHNOLOGY**



[meters.uni-trend.com](https://meters.uni-trend.com)



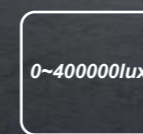
**UNI-T**

## UT381A Illuminance Meter

UT381A is a safe and reliable digit light meter with wide range measurement, widely used in lighting applications, laboratory, office, street lights construction, commercial venue and others.



Detachable  
probe



Wide range



Bluetooth  
APP



Data storage



Color correction  
coefficient

Wide measurement range

0~400000 lx



Phone APP connection through Bluetooth



Backlit LCD display



Real-time display (h:m:s)



Probe of integrated, split and rotatable design



0°



90°



180°



270°

High-precision sensor

Accuracy: ±3% calibration as per standard light source when in 2856K



Durable protective cap



99 sets of data storage



Color Correction Coefficient (CCF)

Used for LED measurement with multiple light color options



R/G/B/Y/P/USER

Switch between color R(red)/G(green)/B(blue)/Y(yellow)/(purple)/USER and coefficient

