



HESTORE.HU

elektronikai alkatrész áruház

EN: This Datasheet is presented by the manufacturer.

Please visit our website for pricing and availability at www.hestore.hu.

INDOOR DETECTORS

The Xline series volumetric motion detectors are especially suitable for professional indoor applications.

They are provided with a perfect combination of high sensitivity and an ultra-low false alarm rate. The use of digital processing of the signals from sensors and the latest extremely-stable signal amplification and filtering technology allows these devices to respond efficiently to intrusion in the protected area and to deliver superior catch performance and precision.



XIR100H

XIR100H, XIR200H

XIR100H and XIR200H are passive infrared detectors that use a dual pyroelectric element capable of detecting infrared radiation.



XIR200H, XDT200H,
XDT200HM, XTT200H

XDT200H, XDT200HM

The dual technology detectors from the Xline series combine infrared and microwave detection using a dual element PIR and a X band microwave element.

XTT200H

The XTT200H combines two dual element PIR and a X band microwave element. It operates as a dual technology detector but is capable of processing three types of input signals. It provides two operating modes, standard and digital.

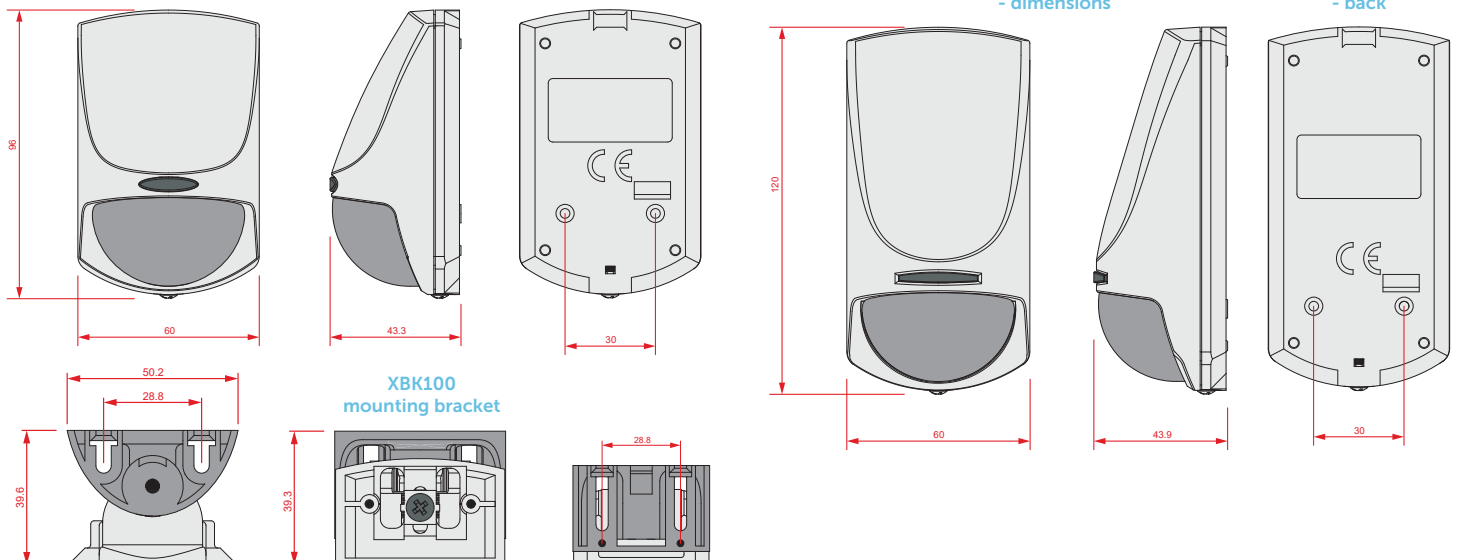
Main features	XIR100H	XIR200H	XDT200H	XDT200HM	XTT200H
Voltage	from 9 to 16V ^{DC}				
Current draw	stand-by 13mA maximum 15mA		stand-by 16mA maximum 20mA		
Sensor type	digital dual PIR		digital dual PIR, microwave module		digital quad PIR, microwave module
MW frequency	No		X band		
Coverage	15m				
Installation	Wall mount, with or without bracket				
Installation height	3m				
Digital signal analysis	Yes				
Protections	Anti-opening	Anti-opening and anti-dislodgement	Anti-opening and anti-dislodgement	Anti-opening, anti-dislodgement and anti-masking	Anti-opening, anti- dislodgement and tilt protection
White light immunity	Yes				
Vibration and tilt sensor	No				Yes
Temperature compensation	Yes				
Bypassable LED	Yes				
Alarm pulses	from 1 to 4				
Predisposed for EOL resistance	No	Yes	Yes	No	Yes
Dimensions (HxWxD)	96x60x44mm		120x60x44mm		
Weight	65g	77g	103g		105g

XIR100H,
- dimensions

XIR100H
- back

XIR200H, XDT200H,
XDT200HM, XTT200H
- dimensions

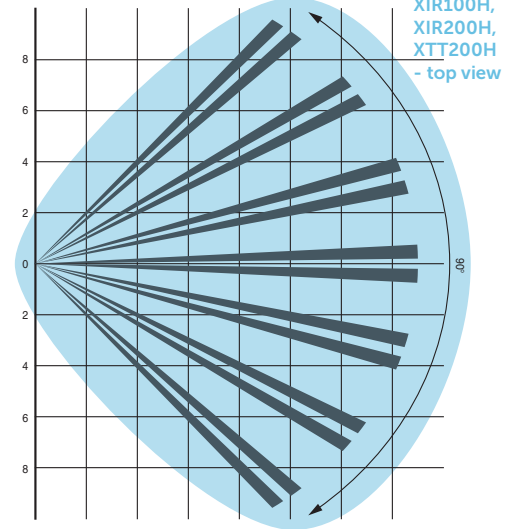
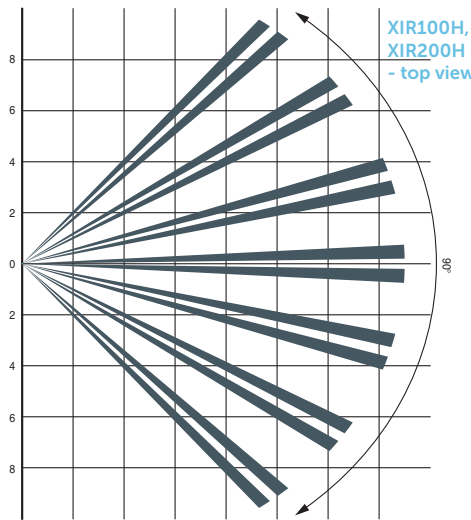
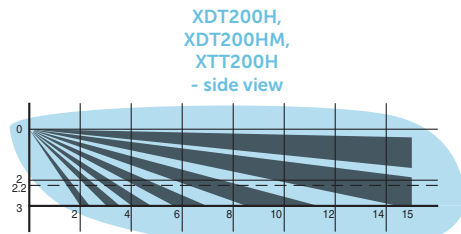
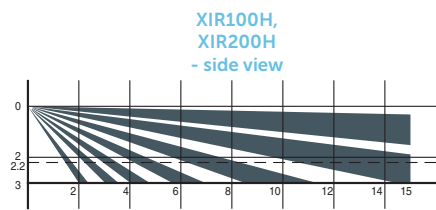
XIR200H, XDT200H,
XDT200HM, XTT200H
- back



XIR100H, XIR200H, XDT200H, XDT200HM, XTT200H

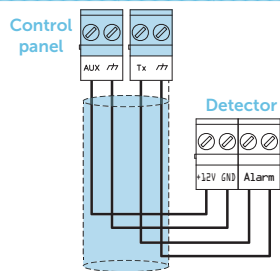


COVERAGE



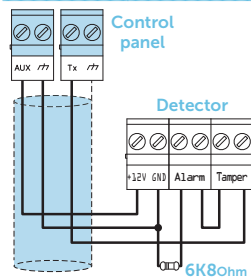
BALANCING

N.C./N.O. Balancing



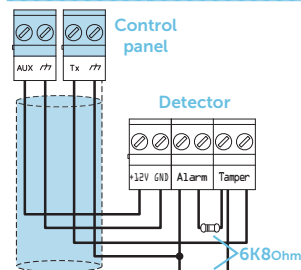
Ohm	Zone	N.O.
> 2 x 3900 + 6800	alarm	standby
> 2 x 3900 + 6800	alarm	standby
3900 + 6800	alarm	alarm
2 x 3900	alarm	alarm
3900	standby	alarm
0	standby	alarm

Single balancing



Ohm	Zone
> 6800	alarm
6800	standby
0	tamper

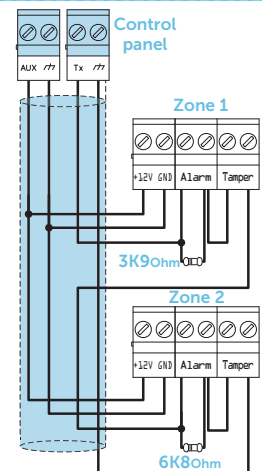
Double balancing



Ohm	Zone
> 6800	tamper (wire cutting)
6800	alarm
6800 / 2	standby
0	tamper (short-circuit)

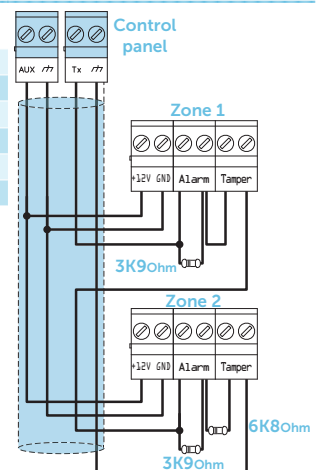
Double-Zone balancing

Ohm	Zone 1	Zone 2 (double)
> 3900 + 6800		tamper
3900 + 6800	alarm	alarm
6800	standby	alarm
3900	alarm	standby
0	standby	standby



Double Zone balancing with EOL

Ohm	Zone 1	Zone 2 (double)
> 2 x 3900 + 6800		tamper (wire cutting)
> 2 x 3900 + 6800	alarm	alarm
3900 + 6800	standby	alarm
2 x 3900	alarm	standby
3900	standby	standby
0		tamper (short-circuit)



ORDER CODES

XIR100H: digital PIR detector with opening protection.

XIR200H: digital PIR detector with opening and dislodgment protection.

XDT200H: dual technology detector with opening and dislodgment protection.

XDT200HM: dual technology detector with opening, dislodgment and masking protection.

XTT200H: triple technology detector with opening, dislodgment and tilt protection.

XBK100: swivel bracket for Xline detectors.



Centobuchi, via Dei Lavoratori 10
63076, Montepandone (AP), ITALY
Tel. +39 0735 705007 _ Fax +39 0735 704912

info@inim.biz _ www.inim.biz