



**HESTORE.HU**

elektronikai alkatrész áruház

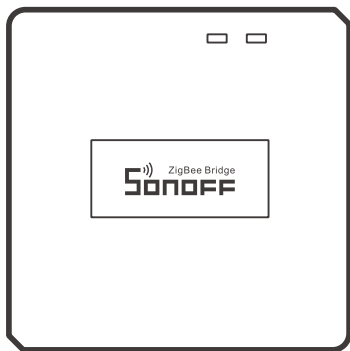
**EN:** This Datasheet is presented by the manufacturer.

Please visit our website for pricing and availability at [www.hestore.hu](http://www.hestore.hu).

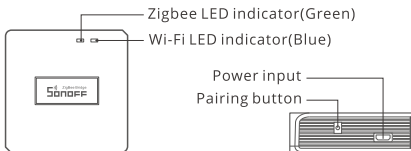


# ZB Bridge-P

User manual V1.0



## New Zigbee Bridge

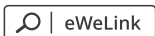


⚠ The device weight is less than 1 kg. The installation height of less than 2 m is recommended.

LED indicator status	Status instruction
Blue LED flashes (two short and one long)	Bluetooth Pairing Mode
Blue LED flashes quickly	Compatible Pairing Mode (AP)
Blue LED keeps on	Device is Online
Blue LED flashes quickly once	Fail to Connect to Router
Blue LED flashes quickly twice	Connected to Router but Fail to Connect to Serve
Blue LED flashes quickly three times	Firmware Updating
Green LED flashes slowly	Searching and adding sub-devices

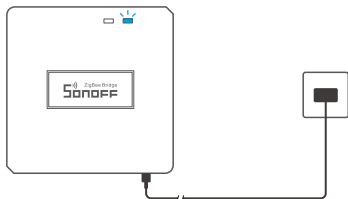
This is a Zigbee Bridge that allows you to control a variety of Zigbee devices by transforming Wi-Fi into Zigbee. You can remotely turn on/off or schedule on/off connected Zigbee devices, or share it with your family to control them together.

## 1. Download “eWeLink”App



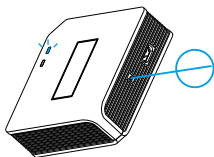
Android™ & iOS

## 2. Power on



Power the device through Micro USB cable. After powering on, the device will enter the Bluetooth Pairing Mode during the first use. The Wi-Fi LED indicator changes in a cycle of two short and one long flash and release.

ⓘ The device will exit the Bluetooth Pairing Mode if not paired within 3mins. If you want to enter this mode, please long press pairing button for about 5s until the Wi-Fi LED indicator changes in a cycle of two short and one long flash and release.

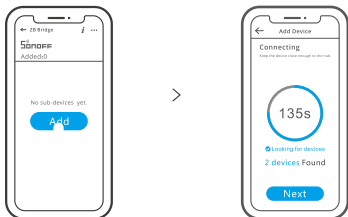


## 3. Add Zigbee Bridge



Tap "+" and select "Bluetooth Pairing", then operate following the prompt on the App.

#### 4. Add Zigbee sub-devices to Zigbee Bridge



Make the sub-devices enter the pairing mode, tap “Add” icon on the Zigbee Bridge interface, then wait it to find the sub-devices and pair.

ZB Bridge-P can connect 26 sub-devices directly, one router-device can expand to connect 20 sub-devices, one bridge can connect up to 128 sub-devices.

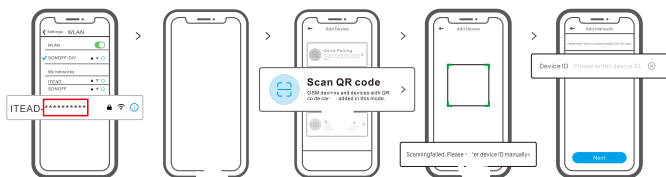
If you fail to enter Bluetooth Pairing Mode, please try “Compatible Pairing Mode” to pair.

Long press Pairing button for 5s until the Wi-Fi LED indicator changes in a cycle of two short flashes and one long flash and release. Long press Pairing button for 5s again until the Wi-Fi LED indicator flashes quickly. Then, the device enters Compatible Pairing Mode.

#### For Android system:

Tap “+” and select “Compatible Pairing Mode” on app , Please follow the app prompts.

#### For iOS system:



- ① When the device is in the compatible mode, please record the device ID ITEAD-\*\*\*\*\*, which can be found in the Wi-Fi list of the mobile phone.
- ② Enter Wi-Fi password, tap “Next” and then “Connect”. Select Wi-Fi SSID with ITEAD-\*\*\*\*\* and enter the password 12345678, and then go back to eWeLink app and tap “Next”. Be patient until pairing completes.

Model	ZB Bridge-P
Input	5V---1A
Wireless connections	Wi-Fi IEEE 802.11 b/g/n 2.4GHz , Zigbee 3.0
Bluetooth Standard	4.2 BLE
App operating systems	Android & iOS
Working temperature	-10°C~40°C
Casing Material	PC V0
Product Size	62x62x20mm

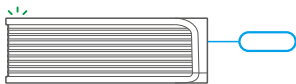
ZB Bridge-P can be muted through following any method:

1. Press the gateway pairing button with a pin card.
2. Click the red "speaker" icon on the gateway interface of eWeLink App.
3. Mute the gateway through scene control settings.

Brands	SONOFF			eWeLink	
Models	BASICZBR3	SNZB-01	SNZB-01P	SA-028	ZBSA-TH
	ZBMINI	SNZB-02	SNZB-02P	SA-029	ZBSA-MS
	ZBMINI-L	SNZB-03	SNZB-03P	SA-030	ZBSA-DS
	S31 Lite zb	SNZB-04	SNZB-04P	SA-003-UK	
	S40ZBTPA Lite	S40ZBTPB Lite		SA-003-US	
	S26R2ZB (TPE/TPG/TPF)				

⚠ The number of supported Zigbee sub-devices will continue to be increased.

### 1. Delete Zigbee sub-devices



Long press the pairing button for 10s until the Zigbee LED indicator “flashes twice”, then all the paired Zigbee sub-devices have been deleted. If you want to delete one of the Zigbee sub-devices, delete it on the App.

### 2. Delete the Bridge

Tap “Delete device” in the setting interface of the Bridge on the App, the device will be reset to factory setting.

### Fail to pair Wi-Fi devices to eWeLink APP

1. Make sure the device is in pairing mode. After three minutes of unsuccessful pairing, the device will automatically exit pairing mode.
2. Please turn on location services and allow location permission. Before choosing the Wi-Fi network, location services should be turned on and location permission should be allowed. Location information permission is used to obtain Wi-Fi list information. If you click Disable, you will not be able to add devices.
3. Make sure your Wi-Fi network runs on the 2.4GHz band.
4. Make sure you entered a correct Wi-Fi SSID and password, no special characters contained. Wrong password is a very common reason for pairing failure.
5. The device shall get close to the router for a good transmission signal condition while pairing.

### Wi-Fi devices "Offline" issue, Please check the following problems by the Wi-Fi LED indicator status:

The LED indicator blinks once every 2s means you fail to connect to the router.

1. Maybe you entered the wrong Wi-Fi SSID and password.
2. Make sure that your Wi-Fi SSID and password don't contain special characters, for example, the Hebrew, Arabic characters, our system can't recognize these characters and then fail to connect to the Wi-Fi.
3. Maybe your router has a lower carrying capacity.
4. Maybe the Wi-Fi strength is weak. Your router is too far away from your device, or there may be some obstacle between the router and device which blocks the signal transmission.
5. Be sure that the MAC of the device is not on the blacklist of your MAC management.

**The LED indicator flashes twice on repeated means you fail to connect to the server.**

1. Make sure the Internet connection is working. You can use your phone or PC to connect to the Internet, and if it fails to access, please check the availability of the Internet connection.
2. Maybe your router has a low carrying capacity. The number of devices connected to the router exceeds its maximum value. Please confirm the maximum number of devices that your router can carry. If it exceeds, please delete some devices or get a larger router and try again.
3. Please contact your ISP and confirm our server address is not shielded:  
cn-disp.coolkit.cc (China Mainland)  
as-disp.coolkit.cc (in Asia except China)  
eu-disp.coolkit.cc (in EU)  
us-disp.coolkit.cc (in US)

If none of the above methods solved this problem, please submit your request via [help&feedback](#) on the eWeLink APP.



Changes or modifications not expressly approved by the party responsible for compliance could avoid the user's authority to operate the equipment.

This device complies with part 15 of the FCC Rules. Operation is subject to the following two conditions: (1) This device may not cause harmful interference, and (2) this device must accept any interference received, including interference that may cause undesired operation.

**FCC Radiation Exposure Statement:**

This equipment complies with FCC radiation exposure limits set forth for an uncontrolled environment. This equipment should be installed and operated with minimum distance 20cm between the radiator & your body. This transmitter must not be co-located or operating in conjunction with any other antenna or transmitter.

**Note:**

This equipment has been tested and found to comply with the limits for a Class B digital device, pursuant to part 15 of the FCC Rules. These limits are designed to provide reasonable protection against harmful interference in a residential installation. This equipment generates, uses and can radiate radio frequency energy and, if not installed and used in accordance with the instructions, may cause harmful interference to radio communications. However, there is no guarantee that interference will not occur in a particular installation. If this equipment does cause harmful interference to radio or television reception, which can be determined by turning the equipment off and on, the user is encouraged to try to correct the interference by one or more of the following measures:

- Reorient or relocate the receiving antenna.
- Increase the separation between the equipment and receiver.
- Connect the equipment into an outlet on a circuit different from that to which the receiver is connected.
- Consult the dealer or an experienced radio/TV technician for help.

Hereby, Shenzhen Sonoff Technologies Co., Ltd. declares that the radio equipment type ZB Bridge-P is in compliance with Directive 2014/53/EU. The full text of the EU declaration of conformity is available at the following internet address:

<https://sonoff.tech/usermanuals>



  
**SONOFF**

**Shenzhen Sonoff Technologies Co., Ltd.**

1001, BLDG8, Lianhua Industrial Park, shenzhen, GD, China  
ZIP code: 518000 Website: sonoff.tech

MADE IN CHINA

