



HESTORE.HU

elektronikai alkatrész áruház

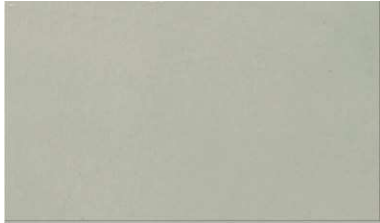
EN: This Datasheet is presented by the manufacturer.

Please visit our website for pricing and availability at www.hestore.hu.

Ninigi

THERMALLY CONDUCTIVE COMPOUNDS D A T A S H E E T

SILICONE SHEETS FOR PADS



Specification:

- 1) Breakdown voltage: ≥ 5 kV
- 2) Thermal conductance: 1 W/mK
- 3) Operating temperature range:
-60°C ~ 200°C
- 4) Conformity with: UL-94V-0

SILI150X220-G

Notes:

None – without glue
G – with glue

Sheet Dimensions:

150X220 – 150 x 220 mm
300X300 – 300 x 300 mm

SERIES NO.	THICKNESS
SILI150X220	0.23 mm
SILI150X220-G	0.23 mm
SILI300X300	0.3 mm
SILI300X300-G	0.3 mm