



HESTORE.HU

elektronikai alkatrész áruház

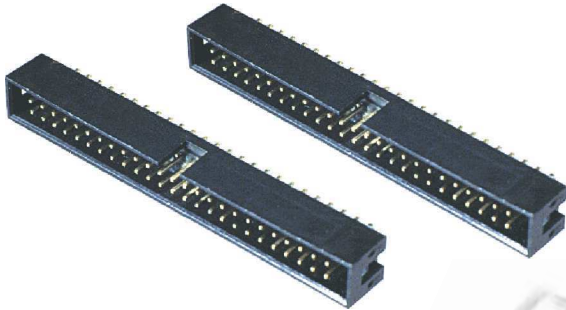
EN: This Datasheet is presented by the manufacturer.

Please visit our website for pricing and availability at www.hestore.hu.

Ninigi

D A T A S H E E T

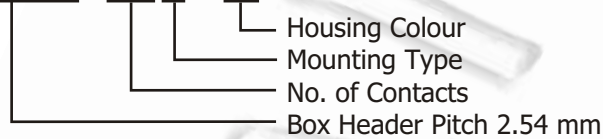
ZL231 SERIES BOX HEADER PITCH 2.54



Specification:

- 1) Operating Temperature: 0°C ~ 85°C
- 2) Contact Resistance: 20 mΩ max. (initial)
- 3) Insulation Resistance: 1000 MΩ min
- 4) Dielectric Withstanding Voltage: 1000 VAC per minute

ZL231-10PGW



NO. OF CONTACTS

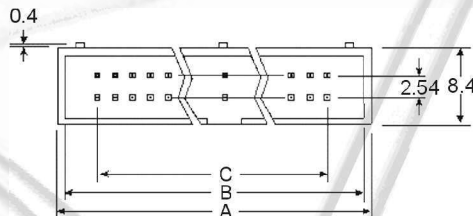
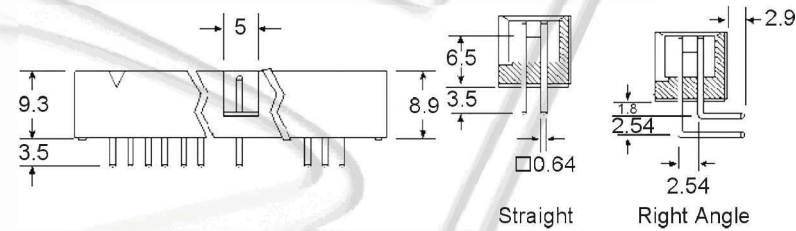
10, 12, 14, 16, 20, 26, 30, 34, 40, 50, 60, 64

HOUSING COLOUR

W white
 U blue
 omitted when standard colour (black)

MOUNTING TYPE

P straight
 K right angle



No. of Contacts	A	B	C
10	20.30	18.10	10.16
12	22.84	20.64	12.70
14	25.38	23.18	15.24
16	27.92	25.72	17.78
20	33.00	30.80	22.86
26	40.62	38.42	30.48
30	46.70	43.50	35.56
34	50.78	48.58	40.64
40	58.40	56.20	48.26
50	71.10	68.90	60.96
60	83.80	81.60	73.66
64	88.88	86.68	78.74