

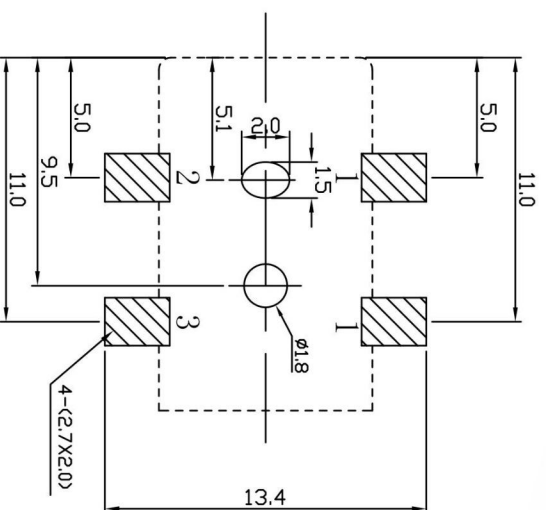
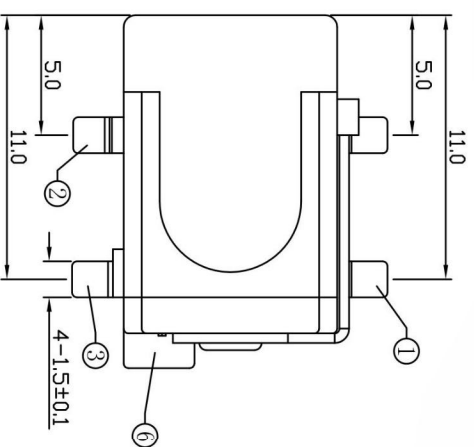
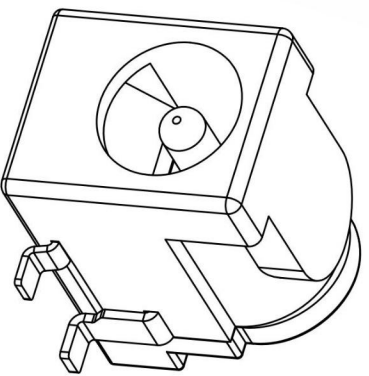


HESTORE.HU

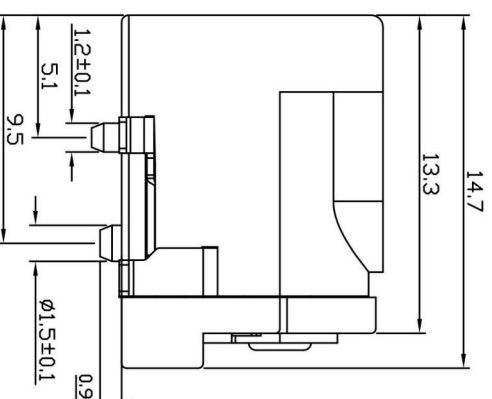
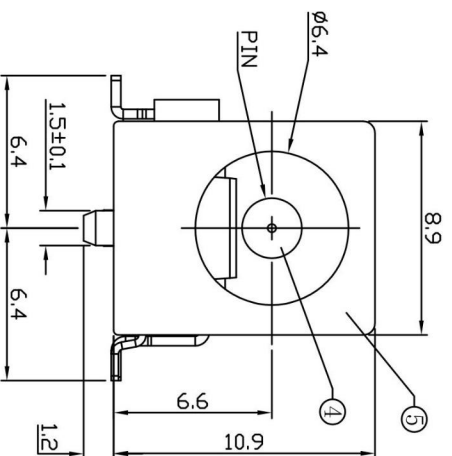
elektronikai alkatrész áruház

EN: This Datasheet is presented by the manufacturer.

Please visit our website for pricing and availability at www.hestore.hu.



T:1.6 Dimensions of PC board holes
 Tolerance : ±0.1(Printed-top view)



| | | | | | |
|-----|-------------|-----|-------------------|----------------|-----------------|
| 6 | COVER | 1 | PA9T | UL-94V0(BLACK) | |
| 5 | HOUSING | 1 | PA9T | UL-94V0(BLACK) | |
| 4 | PIN | 1 | H59(COPPER ALLOY) | MB:Cu | Cn/Sn PLATED |
| 3 | CURVE PIECE | 1 | C2680 | t=0.40 | MB:Cu Sn PLATED |
| 2 | SPRING | 1 | C5191 | t=0.30 | MB:Cu Sn PLATED |
| 1 | CURVE PIECE | 1 | C2680 | t=0.40 | MB:Cu Sn PLATED |
| LTR | PART NAME | QTY | MATERIAL | REMARK | |

| SCHEMATIC | | |
|------------------|------|--|
| C8118-CCTB00000R | φ2.0 | |
| C8118-DCTB00000R | φ2.5 | |

UNLESS OTHERWISE SPECIFIED, TOLERANCE ON DECIMAL:±0.2

ROHS
Compliant

宏茂科技股份有限公司

| | | | |
|---------------------------|----------------------|------------------------|--|
| App'd 核准 BETTY | SCALE 比例 参考 | TOLERANCE 容許公差 ± | PART NAME 品名 |
| DWG. 製圖 BETTY | UNIT 單位 MM | ANGLE 角度 ± | DC POWER JACK SMT TYPE φ2.0mm or φ2.5mm NORMAL CLOSE TIN PLATING BLACK INSULATOR REEL PACKING ROHS |
| DATE 制表日 2010/01/07 | PAGE 張數 1 OF 1 | REV. 版本 B | PART NO. 料號 |