



**HESTORE.HU**

elektronikai alkatrész áruház

**EN:** This Datasheet is presented by the manufacturer.

Please visit our website for pricing and availability at [www.hestore.hu](http://www.hestore.hu).

## FEATURES AND SPECIFICATIONS

## Features and Benefits

- Flanges allow for screw-in retention to board-mounted header
- Low profile for space constraints
- Positive housing locks

## Reference Information

Product Specification: PS-5556-0001

Packaging: Tray or bag

UL File No.: E29179

CSA File No.: LR19980

TUV License No.: R75142

Mates With: [5557](#) dual row receptacle

Designed In: Millimeters

## Electrical

Voltage: 600V

Current: (Used with 16 AWG)

Circuits	2-3	4-6	7-10	12-24
Amperes-Jr.	9	8	7	6
Amperes-HCS	12	11	10	9

Contact Resistance: 10mΩ max.

Dielectric Withstanding Voltage: 1500V

Insulation Resistance: 1000 MΩ min.

## Mechanical

Insertion Force to PCB: 5.0kg max.

Mating Force: 0.7kg (1.54 lb) max.

Unmating Force: 0.35kg (0.7 lb) min.

Normal Force: 200g min.

Durability: 30 cycles

## Physical

Housing: 6/6 nylon, UL 94V-2 or 94V-0

Contact: Brass

Plating: Tin, select Gold or overall Gold

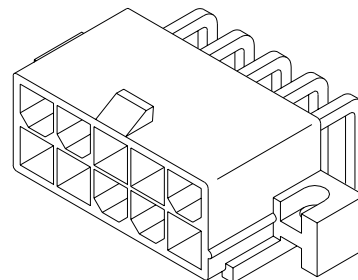
Operating Temperature: -40 to +105°C



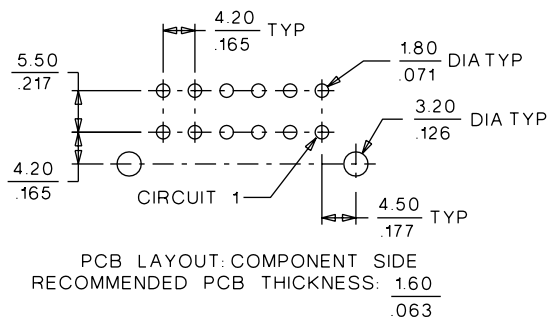
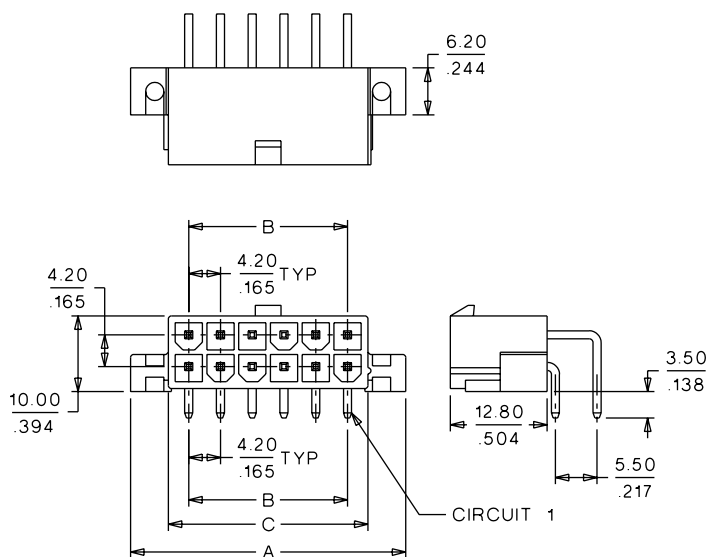
# 4.20mm (.165") Pitch Mini-Fit, Jr.™ Header

5569

## Right Angle, Dual Row With Flanges



## CATALOG DRAWING (FOR REFERENCE ONLY)



## ORDERING INFORMATION AND DIMENSIONS

Circuits	Order No.						Dimension		
	Tin Plated		Gold Plated (30μ")		Select Gold Plated (30μ")		A	B	C
	94V-2	94V-0	94V-2	94V-0	94V-0	94V-2			
2	• 39-29-1028	• 39-29-1027	• 39-29-5023	• 39-29-4029	• 39-34-7020	• 39-34-7021	15.40 (.606)		5.40 (.213)
4	• 39-29-1048	• 39-29-1047	• 39-29-5043	• 39-29-4049	• 39-34-7040	• 39-34-7041	19.60 (.772)	4.20 (.165)	9.60 (.378)
6	• 39-29-1068	• 39-29-1067	• 39-29-5063	• 39-29-4069			23.80 (.937)	8.40 (.331)	13.80 (.543)
8	• 39-29-1088	• 39-29-1087	• 39-29-5083	• 39-29-4089			28.00 (1.102)	12.60 (.496)	18.00 (1.709)
10	• 39-29-1108	• 39-29-1107	• 39-29-5103	• 39-29-4109			32.20 (1.268)	16.80 (.661)	22.20 (.874)
12	• 39-29-1128	• 39-29-1127	• 39-29-5123	• 39-29-4129			36.40 (1.433)	21.00 (.827)	26.40 (1.039)
14	• 39-29-1148	• 39-29-1147	• 39-29-5143	• 39-29-4149			40.60 (1.598)	25.20 (.992)	30.60 (1.205)
16	• 39-29-1168	• 39-29-1167	• 39-29-5163	• 39-29-4169			44.80 (1.764)	29.40 (1.158)	34.80 (1.370)
18	• 39-29-1188	• 39-29-1187	• 39-29-5183	• 39-29-4189			49.00 (1.929)	33.60 (1.323)	39.00 (1.535)
20	• 39-29-1208	• 39-29-1207	• 39-29-5203	• 39-29-4209			53.20 (2.094)	37.80 (1.488)	43.20 (1.701)
22	• 39-29-1228	• 39-29-1227	• 39-29-5223	• 39-29-4229			57.40 (2.260)	42.00 (1.654)	47.40 (1.866)
24	• 39-29-1248	• 39-29-1247	• 39-29-5243	• 39-29-4249			61.60 (2.425)	46.20 (1.819)	51.60 (2.031)

• US Standard Product, available through Molex franchised distributors