



HESTORE.HU

elektronikai alkatrész áruház

EN: This Datasheet is presented by the manufacturer.

Please visit our website for pricing and availability at www.hestore.hu.



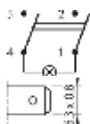
SX82 Series | Illuminated double-pole switch 20A quick connection 6.3 black body



sample image

PRODUCT CODE: SX8211881G210000

Wiring diagrams



Terminal type

Accessories

Body colour



Actuator colour



Marking



Marking colour



Rating

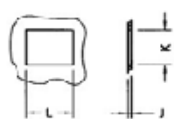
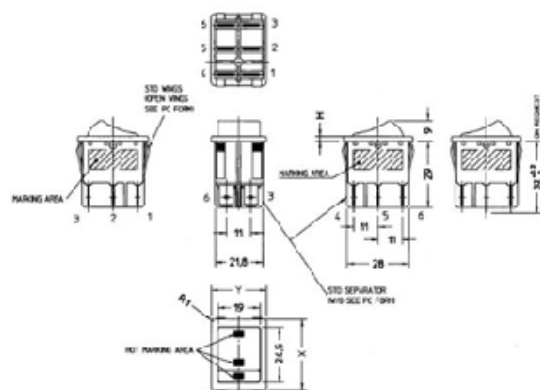
20 (2) A / 250 VAC
 16 (8) A / 250 VAC
 10 (6) A / 250 VAC - 5E4
 T125/ 55 °C

20 A / 125 VAC
 16 A / 250 VAC
 3/4 HP - 125 VAC
 3/4 HP - 250 VAC
 T105 °C

Approvals



Dimensions (mm)



	W	H	T	L	K	J
STANDARD	27	32	25	44.5±0.1	22±0.1	2.7-3.5
EMC GAP VERSION	27	32	25	44.5±0.1	22±0.1	2.7-3.5
SPECIAL FRAME	25	31.5	23.5	42.4±0.1	22±0.1	2.7-3.5
UK CUT OUT	27	30.2	22	41.2±0.1	22.35	2.7-3.5

Stampa scheda