



**HESTORE.HU**

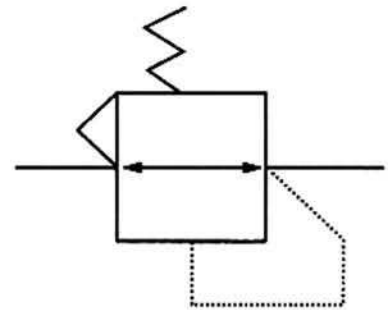
elektronikai alkatrész áruház

**EN:** This Datasheet is presented by the manufacturer.

Please visit our website for pricing and availability at [www.hestore.hu](http://www.hestore.hu).

## How to Order

### Sign



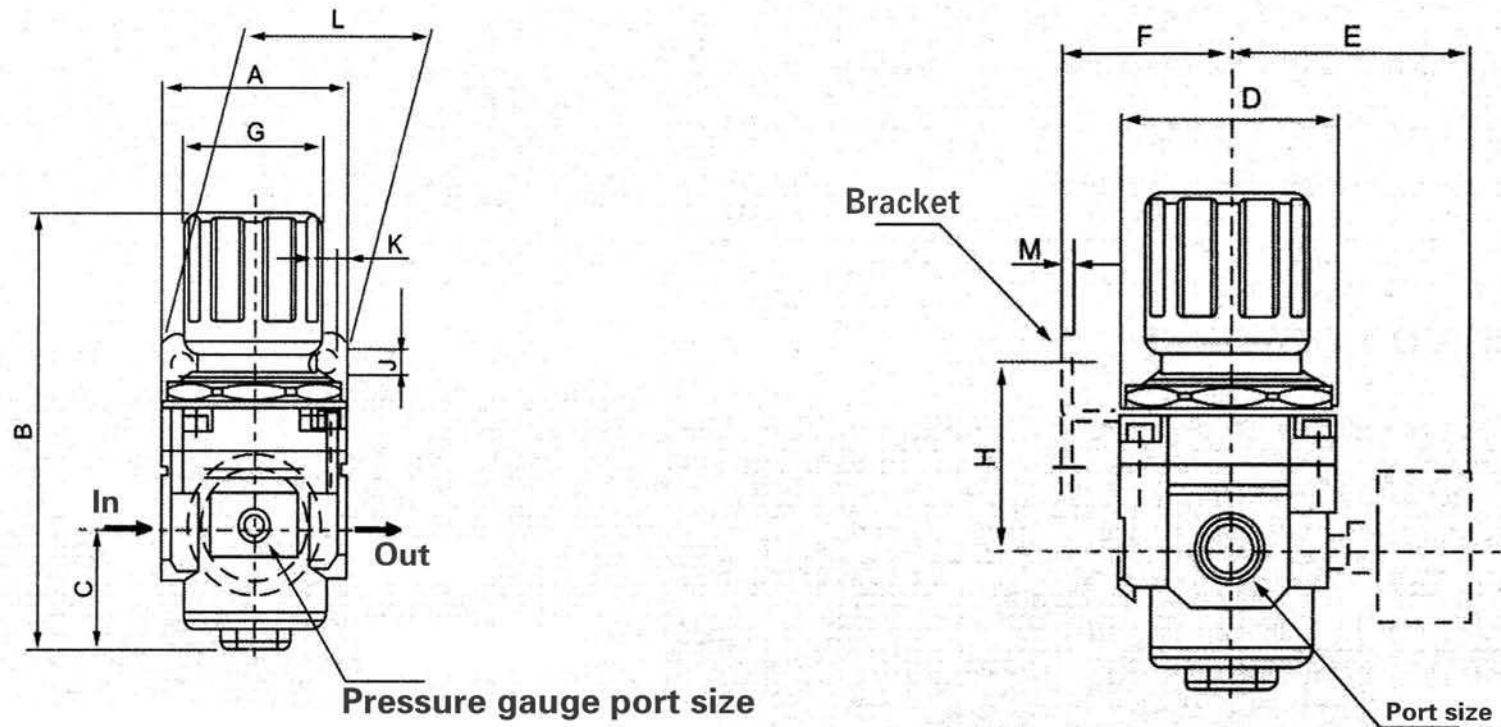
AR	2000	-	02
Series No.	Body Size		Port Size
	2000		02:1/4 "
	3000		03:3/8 "
	4000		04:1/2 "
	5000		06:3/4 "
			10:1 "



### Technological Data

Item Number	AR2000-02	AR3000-02	AR3000-03	AR4000-03	AR4000-04	AR4000-06	AR5000-06	AR5000-10
Minimum Operating Procedures	1/4 "	1/4 "	3/8 "	3/8 "	1/2 "	3/4 "	3/4 "	1 "
Port Size (PT)	550	2500	2500	6000	6000	6000	8000	8000
Cup Capacity	Air							
Nominal Flow Rate (L/Min)	1.5Mpa(15.3kgf/cm <sup>2</sup> )							
Working Medium	1.0Mpa(10.2kgf/cm <sup>2</sup> )							
Proof ressure	5~60℃							
Maximum Operating Pressure	0.05~0.85Mpa							
Ambient and Fluid Temperature	B220	B320	B320	B420	B420	B420	B640	B640
Pressure Range	0.27	0.41	0.41	0.85	0.84	0.94	1.19	1.19
Weight (kg)	Aluminum							

## Outline Dimension Drawing



Item Number	Port Size	A	B	C	D	E	F	G	H	J	K	L	M	P
AR2000	1/4 "	40	95	17	40	56.8	30	34	45	5.4	15.4	55	2.3	33.5
AR2500	1/4 "	53	102.5	25	48	60.8	30	34	44	5.4	15.4	55	2.3	33.5
AR3000	1/4 ", 3/8 "	53	127.5	35	53	60.8	41	40	46	6.5	8	53	2.3	42.5
AR4000	3/8 ", 1/2 "	70	149.5	37.5	70	65.5	50	54	54	8.5	10.5	70	2.3	52.5
AR4000-06	3/4 "	75	154.5	40.5	70	69.5	50	66	56	8.5	10.5	70	2.3	52.5
AR5000	3/4 ", 1	95	168	48	90	75.5	70	65.8	65.8	11	13	90	3.2	52.5